

Burlington County Board of County Commissioners

# Burlington County Parks System Program Guide

*Winter 2024-2025*

[www.co.burlington.nj.us/parks](http://www.co.burlington.nj.us/parks)





Photo by Dave Wybierala

**Flying Squirrel in one of Burlington County's Parks**

# Message from Commissioner Allison Eckel

## Hello friends!

It may be turning colder outside, but there's plenty of fun and exciting activities for residents and visitors to enjoy within the Burlington County Parks System.

The winter months are a great time to visit Burlington County's museums and art galleries, including the Burlington County Lyceum of History and Natural Sciences in Mount Holly.

Located inside the restored Langstaff Mansion at 307 High Street, the Lyceum features a series of exhibits about Burlington County's geology, people, industries and historic events. Artifacts ranging from mastodon and giant sloth bones to Native American tools and 18th century furnishings can be viewed, and visitors can learn about subjects like fashion, local history and more during the history presentations held there. The Lyceum also hosts free, family-friendly entertainment, like board game nights, for residents of all ages.

Art enthusiasts should visit the County's three galleries. On display in the Smithville Mansion Annex Gallery through Jan. 4 is the Burlington County Juried Art Show featuring outstanding paintings, photographs, drawings and more from artists from Burlington County and beyond.

Burlington County also holds the largest collection of artworks from Hugh Campbell, a renown painter, sketcher and writer who was dubbed the "Van Gogh of Mount Holly" because of his love for painting the town's scenery and countryside. Many of his works are on display at the Warden's House Gallery on Grant Street in Mount Holly.

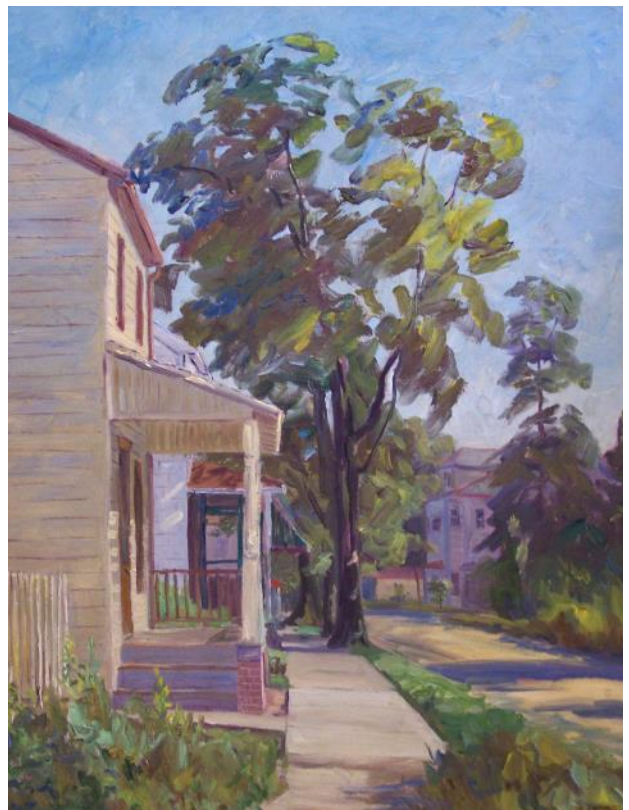
Historic Smithville Park will also be decorated for the season in December and transformed into a winter wonderland for Winter Fest on Dec. 14. The festival is a huge celebration of the season featuring all kinds of holiday entertainment and fun.

The Burlington County Farmers Market will hold a special "Holiday Market" on Saturday, December 7, from 10 AM to 2 PM. It is the perfect destination to shop for holiday gifts, decorations and delicious seasonal foods.

There's plenty more to do and see this season with a packed schedule of events, programs and classes for all ages and interests. You'll find all the details within this guide. Be sure to plan a visit to a Burlington County park, museum or gallery soon!

## Allison Eckel, Burlington County Commissioner

Liaison to the Department of Resource Conservation and the Division of Parks



Painting by Hugh Campbell  
Cover photo by Sandra C. Davis

# Burlington County Parks Information

## **Parks** Open everyday: Dawn to Dusk

### **Amico Island (1)**

81 Norman Ave. Delran, NJ 08075

### **Arney's Mount (13)**

150 Juliustown Rd. Columbus, NJ 08022

### **Boundary Creek (5)**

515 Creek Rd. Moorestown, NJ 08057

### **Burlington County Agricultural Center (6)**

500 Centerton Rd. Moorestown, NJ 08057

### **Burlington County Amphitheater (8)**

5 Pioneer Blvd. Westampton, NJ 08060

### **Burlington County Fairgrounds (11)**

1990 Jacksonville-Jobstown Rd. Columbus NJ 08022

### **Crystal Lake Park (12)**

2401 Axe Factory Rd. Mansfield, NJ 08505

### **Historic Smithville Park (10)**

803 Smithville Rd. Eastampton, NJ 08060

### **Long Bridge Park (9)**

895 Deacon Rd. Hainesport, NJ 08036

### **Pennington Park (2)**

801 Creek Rd. Delanco, NJ 08075

### **Rainbow Meadow Park (4)**

237 Creek Rd. Delran, NJ 08075

### **Rancocas Nature Center (7)**

794 Rancocas Rd. Westampton, NJ 08060

### **Rancocas State Park (7)** 2 Entrances:

Deacon Rd. & Rancocas Ave. Hainesport, 08036

### **Smith's Woods (10)**

39 E Railroad Ave. Eastampton, NJ 08060

### **Willingboro Lakes (3)**

60 Beverly Rancocas Road, Beverly, NJ 08010

## **Art, History & Culture**

### **Historic Smithville Park**

803 Smithville Rd. Eastampton, NJ 08060

#### **Visitor Center**

Tue - Sun: 12:30 pm - 4:00 pm

#### **Smithville Mansion**

Tours\*: May – October:

Thu & Sun: 1 pm, 2 pm & 3 pm

\*\$8.00-\$10.00 cash only donation

#### **Smithville Mansion Annex Gallery**

Thu - Sat: 10 am - 4 pm, Sun: 12 pm - 4 pm

#### **Worker's House & Gallery**

Thu - Sat: 10 am - 4 pm, Sun: 12 pm - 4 pm

#### **Underground Railroad Museum**

Sat & Sun: 12 pm - 4 pm

## **Mount Holly**

### **Warden's House Gallery**

150 High St., Mount Holly, NJ 08060

Thu - Sat: 10 am - 4 pm, Sun: 12 pm - 4 pm

### **Burlington County Lyceum of History and Natural Sciences**

307 High Street, Mount Holly, NJ 08060

Thu - Sat: 10 am - 4 pm, Sun: 12 pm - 4 pm

### **Historic Prison Museum**

128 High Street, Mount Holly, NJ 08060

Thu - Sat: 10 am - 4 pm, Sun: 12 pm - 4 pm

Our museums, galleries and buildings are ADA accessible.

Individuals requiring special accommodations are requested to give two weeks advance notification.

**Contact us: 609-265-5858**

**Email: [parks@co.burlington.nj.us](mailto:parks@co.burlington.nj.us)**



**@burlicoparks**

## **BURLINGTON COUNTY BOARD OF COUNTY COMMISSIONERS**

**Director: Felicia Hopson**

**Deputy Director: Daniel O'Connell**

**Commissioners: Allison Eckel, Tom Pullion, Balvir Singh**

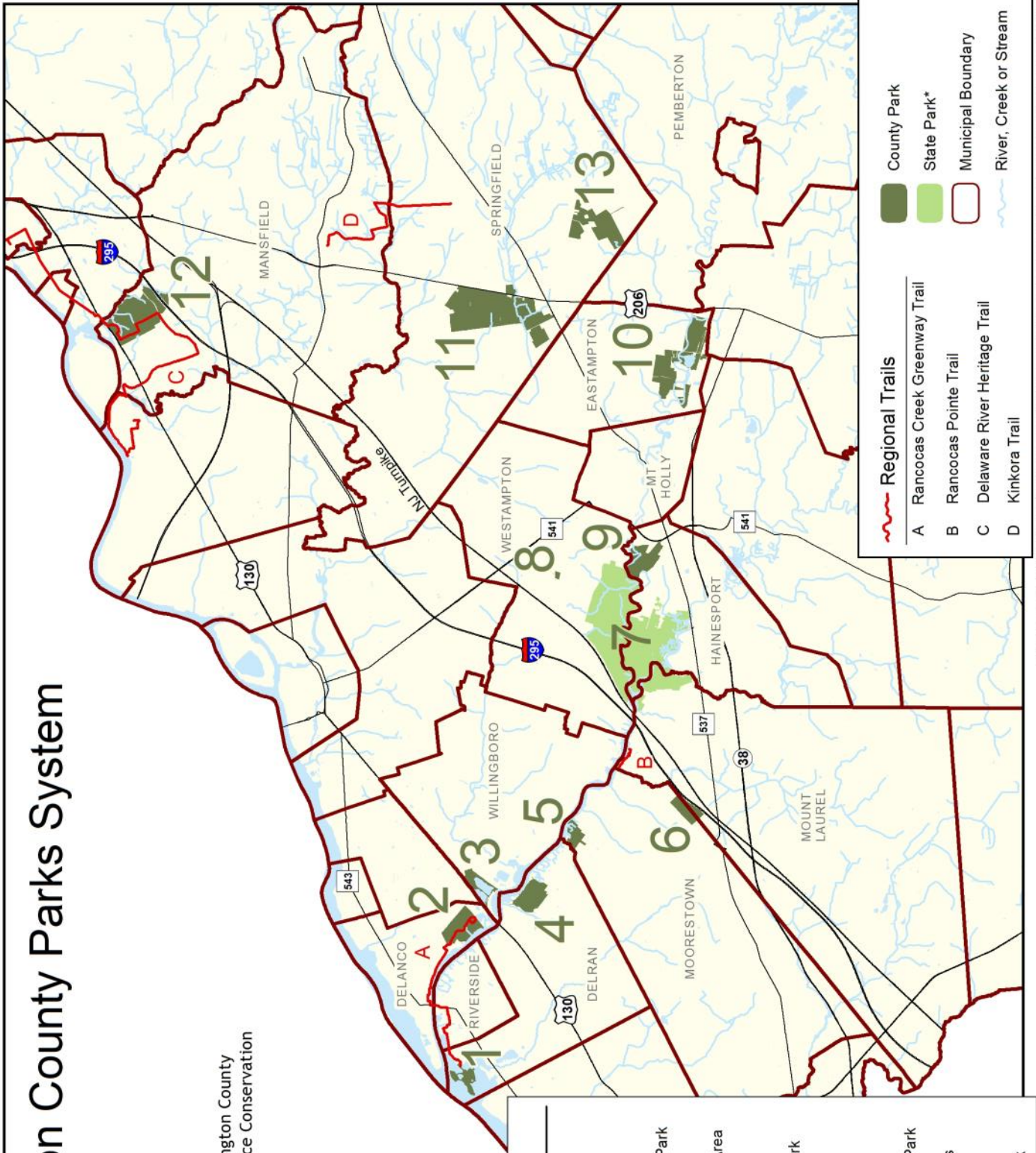
**[www.co.burlington.nj.us/parks](http://www.co.burlington.nj.us/parks)**

# Burlington County Park System

## Burlington County Parks System



Produced by the Burlington County  
Department of Resource Conservation  
May 2023



Key	Park Name
1	Amico Island Park
2	Pennington Park
3	Willingboro Lakes
4	Rainbow Meadow Park
5	Boundary Creek Natural Resource Area
6	Burlington County Agricultural Center
7	Rancocas State Park
8	Ampitheater
9	Long Bridge Park
10	Historic Smithville Park
11	County Fairgrounds
12	Crystal Lake Park
13	Arney's Mount Park

Regional Trails	
	Regional Trails
	Rancocas Creek Greenway Trail
	Rancocas Pointe Trail
	Delaware River Heritage Trail
	Kinkora Trail
	County Park
	State Park*
	Municipal Boundary
	River, Creek or Stream

\* Rancocas State Park in Hainesport Twp is jointly managed by the State and Burlington County



**BURLINGTON COUNTY FARMERS MARKET**



# HOLIDAY MARKET

**December 7th 10 - 2 pm**

 **LIVE MUSIC WITH**  
**JOSHUA HOLLAND** 

 **MARK YOUR CALENDARS FOR OUR**  
**SPECIAL POST-SEASON HOLIDAY MARKET!** 

-  **FRESH LOCAL PRODUCE**
- FARM FRESH MEATS**
-  **LOCAL HONEY & FRESH EGGS**
- PICKLES, SAUCES, JAMS & JELLIES**
-  **ARTISAN CHOCOLATE & CHEESES**
- BAKED GOODS & PREPARED FOODS**
- HANDCRAFTED ART & SEASONAL DECOR**

SUPPORTING YOUR LOCAL FARMERS MARKET IS ALWAYS IN SEASON!

**VOTED #1 FARMERS MARKET IN NJ!** 

 **BURLINGTON COUNTY AGRICULTURAL CENTER**  
**500 CENTERTON RD. MOORESTOWN, NJ**



# A VICTORIAN CHRISTMAS *at the Mansion*

PRESENTED BY FRIENDS OF THE MANSION AT SMITHVILLE  
OUR 2024 CHRISTMAS THEME

## *"A Victorian Christmas in Smithville"*

ENJOY THE SMITHVILLE MANSION IN ALL OF ITS HOLIDAY GLORY  
DURING THE CHRISTMAS SEASON.

DOCENT-GUIDED HOLIDAY TOURS OF HISTORIC SMITHVILLE MANSION.



### *Holiday Daily Tours*

THURSDAY, FRIDAY, SATURDAY, AND SUNDAY STARTING  
DECEMBER 5TH – DECEMBER 29TH.

TOURS BEGIN AT 12:00 PM, 1:00 PM, AND 2:00 PM  
ADULTS: \$10 SENIOR/STUDENTS: \$8 PER PERSON

WE WILL BE CLOSED ON DEC. 8TH, DEC. 24TH,  
& DEC. 25TH

VISIT OUR CHRISTMAS BOUTIQUE  
OPEN DURING OUR TOUR HOURS

### *Holiday Candlelight Tours*

DEC. 4TH, DEC. 12TH, DEC. 19TH, & DEC. 27TH  
THE COST PER PERSON IS \$20.00

THE TOURS WILL BEGIN AT 7:00 PM AND 7:30 PM  
RESERVATIONS ARE REQUIRED AND CAN BE MADE  
ONLINE.

FOR MORE INFORMATION EMAIL

[SLEINBACH@SMITHVILLEMANSION.ORG](mailto:SLEINBACH@SMITHVILLEMANSION.ORG).

THE MANSION WILL BE CLOSED JANUARY AND  
FEBRUARY OF 2025.



SCAN ME

[WWW.SMITHVILLEMANSION.ORG](http://WWW.SMITHVILLEMANSION.ORG)

# SMITHVILLE SWITCH-NIGHT

- ◆ Experiment with sound using electronic instruments.
- ◆ Try one of our synthesizers or bring your own.
- ◆ Jam out, make friends and learn about music.
- ◆ Performances by local musicians.
- ◆ All ages and skill levels welcome.

**DEC 5:**

Synthes

**JAN 2:**

Dave Smolen

**FEB 6:**

Erock

**MAR 6:**

Melodic

“Mike Ott”

**6:00 - 9:00 PM**

Historic Smithville Park  
Annex Art Gallery  
803 Smithville Road  
Eastampton, NJ 08060

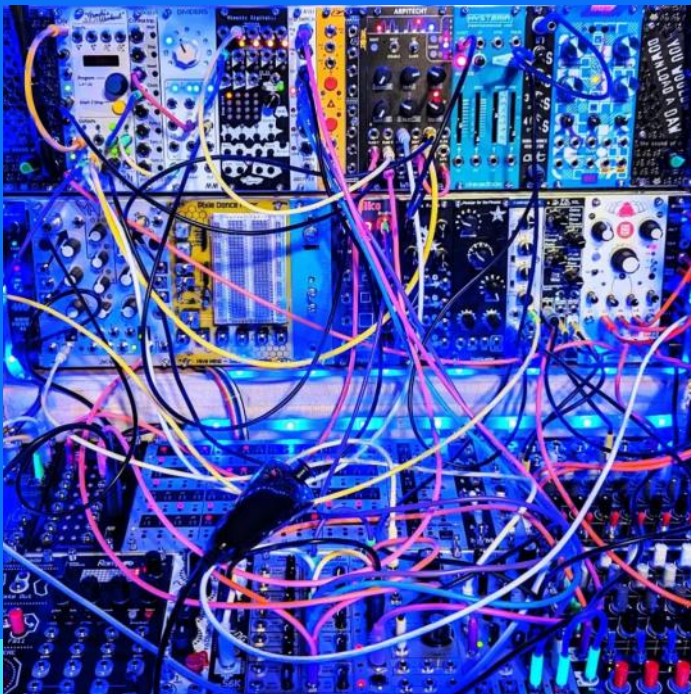


Photo by Scott Armstrong

[www.co.burlington.nj.us/parks](http://www.co.burlington.nj.us/parks)



# Winter Fest

Historic Smithville Park  
Eastampton, NJ

**SATURDAY, DECEMBER 14**

**1 PM - 6 PM**

**WELCOME THE HOLIDAY SEASON WITH A CELEBRATION OF ALL THINGS WINTER THAT WILL WARM YOUR HEART!**

VICTORIAN SANTA

BONFIRE & S'MORES

HOLIDAY MARKETPLACE

WANDERING CAROLERS

ICELESS SKATING

KIDS ACTIVITIES

ELF HUNT

PERFORMANCE OF "A CHRISTMAS CAROL"

PERFORMANCE BY "SCHOOL OF ROCK"

ICE CARVERS

COOKIE DECORATING

WINE & MULLED CIDER

FOOD TRUCKS AND MORE

TRACKLESS TRAIN



SCAN ME



Follow Us on Facebook! @BurlcoParksNJ

[www.co.burlington.nj.us/parks](http://www.co.burlington.nj.us/parks)



# Health & Fitness



## TOBATA by Toby

### Burlington County Lyceum

Tuesdays | 10:00 AM - 11:00 AM

Dec 3, 10 | Jan 7, 14, 21, 28 | Feb 4, 11, 18, 25

FREE — Registration required [Register Here.](#)

Tobata by Toby is an exciting interval class focused on improving cardiovascular fitness and muscle endurance with featured movements done in intervals followed by a rest period. Students are encouraged to go at their own pace, and increase their fitness level as they progress. Bring an exercise mat. Exercise resistance bands and dumbbells strongly urged.

## Yoga

### Burlington County Lyceum

Tuesdays | 5:30 PM - 6:30 PM

Dec 3, 10 | Jan 7, 14, 21, 28 | Feb 4, 11, 18, 25

FREE — Registration required [Register Here.](#)

Yoga is a practice of mind, body, and soul connection. It allows us to drop into the moment and move freely while nourishing ourselves fully. We will be practicing vinyasa-style yoga with an emphasis on strength with a sequence of postures that flow with breath to cultivate focus, alignment, stamina, and flexibility. We will begin and end our class with a brief meditation focused on new wellness themes each week. This class will be taught to all levels with variations and options throughout the practice. Please bring a yoga mat. Yoga blocks are encouraged but not required.



## Healthy Hike Series: Winter Wonders

Thursdays | 10:00 AM

Historic Smithville Park | December 5 [Register Here.](#)

Amico Island Park | January 9 [Register Here.](#)

Crystal Lake Park | February 6 \* [Register Here.](#)

\*steep slopes at this location – trekking poles strongly recommended.

FREE—Registration required

Winter hiking is an excellent opportunity to exercise, make new friends, and appreciate the stillness of the season. Come hike with Park Naturalist Gina DiMaio, and embrace the chilly weather as we explore mindfulness in nature while navigating our trails and learning about the unique ecosystems of our parks. **Audience: Ages 18+. Miles: 2-3+.**

**Difficulty: Moderate to difficult depending on location (steep slopes, stairs, boardwalks and mixed terrain).**



# N♦A♦T♦U♦R♦E

Dates, times and locations are subject to change. Refer to the registration page for each respective program for the most current information.

## TUESDAY TALKS & FRIDAY FORUMS

*A series of nature walks led by Naturalist Jen Bulava on select Tuesdays and Fridays.*

FREE-Registration is required. Ages 11+

### Winter Ecology Inspirations

#### Historic Smithville Park

Tuesday, December 3 | 1:00 PM [Register Here.](#)

Friday, December 6 | 1:00 PM [Register Here.](#)

Join Jen for a winter ecology walk while trying your hand at short impromptu poetry inspired by our observations along the trails. **Miles: around 1. Difficulty: moderate, due to slopes and steps on the ravine trail as well as uneven rooted terrain.**

### Winter Wildlife

#### Rancocas Pointe Trail

Tuesday, January 28 | 10:00 AM [Register Here.](#)

Friday, January 31 | 12:30 PM [Register Here.](#)

Take an easy stroll down the half-mile Rancocas Pointe Trail to look for migratory winter waterfowl on the main stem of the Rancocas Creek. We will also observe signs of beavers that are very active along this stretch. **Miles: 1. Difficulty: easy – flat crushed stone and boardwalk.**



Photo by Jen Bulava

### Waterfowl Walk

#### Amico Island Park

Tuesday, February 18 | 10:30 AM [Register Here.](#)

Friday, February 21 | 1:00 PM [Register Here.](#)

At the end of February, waterfowl diversity increases as more migratory species congregate on the Delaware River and Rancocas Creek, preparing for their northbound journey. Our walk around Amico Island will give us great views of the surrounding water bodies that host good numbers of ducks and other water birds.

**Miles: About 1.5. Difficulty: moderate, uneven natural terrain with some roots and rocks.**

### Winter Bird Counts

FREE-Registration is required.

We're seeking experienced birders to join us for Burlington County's version of the "Christmas Bird Count", a scientific survey of the bird species that over-winter in the County Parks. Participants will identify species by sight and sound at specified locations within each County Park (not for beginner birders). Free registration is required if you would like to contribute your bird identification skills to help the Parks System with the census. **Audience: ages 14+. Group size is limited. Exact start times will vary and are available at the time of registration. Prepare for at least 2 hours of cold and windy weather at each location.**



Friday, December 13: Long Bridge Park [Register Here.](#)

Monday, December 16: Pennington Park [Register Here.](#)

Tuesday, December 17: Historic Smithville Park & Smith's Woods [Register Here.](#)

Wednesday, December 18: Rainbow Meadow & Willingboro Lakes [Register Here.](#)

Thursday, December 19: Crystal Lake Park [Register Here.](#)

Thursday, January 2: Amico Island Park [Register Here.](#)

Friday, January 3: Boundary Creek & Rancocas Pointe Trail [Register Here.](#)

Monday, January 6: Arney's Mount Park [Register Here.](#)

# N♦A♦T♦U♦R♦E

## Moonlit Trail Walk Series

**Boundary Creek Natural Resource Area**

Thursday, December 12 | 5:00 PM [Register Here.](#)

**Historic Smithville Park**

Thursday, January 9 | 5:30 PM [Register Here.](#)

**Long Bridge Park**

Thursday, February 13 | 6:00 PM [Register Here.](#)

Experience the parks in a whole new light – moonlight that is! Hiking at night can be an enchanting experience but it doesn't have to be intimidating. Explore the parks with Park Naturalist Gina DiMaio and a Park Ranger for an opportunity to listen and watch for nocturnal wildlife while admiring constellations, planets, and maybe even satellites. Bring your curiosity and allow your eyes to adjust to the darkness. Red-light headlamps or flashlights are welcome to preserve our night vision.

**Audience: all ages welcome. Miles: 1-2. Difficulty: easy to moderate depending on location. FREE - Registration is required.**



## Winter Tree ID

**Smith's Woods**

Saturday, December 14 | 10:00 AM [Register Here.](#)

**Willingboro Lakes Park**

Sunday, January 12 | 10:00 AM [Register Here.](#)

**Boundary Creek Natural Resource Area**

Monday, February 24 | 10:00 AM [Register Here.](#)

How can you identify trees in the winter after they lose their leaves? Bundle up and join Park Naturalist Gina DiMaio to explore tree biodiversity at a new park each month. We'll discover how growth pattern, bark texture, and buds on twigs provide clues to a tree's identity!

**Audience: ages 12+ through adult. Miles: 1. Difficulty: easy-moderate depending on location, natural terrain, wooden stairs, some elevation, wooden boardwalks. FREE - Registration is required.**

---

## SERVICE PROJECT - Beat the Bug: Spotted Lanternfly Egg Scraping

**Amico Island Park**

Thursday, January 23 | 11:00 AM [Register Here.](#)

**Pennington Park**

Saturday, February 22 | 11:00 AM [Register Here.](#)

Free—Registration is required.

Join a park naturalist and the USDA to scrape spotted lanternfly egg masses off trees. Winter is a great time to eliminate these pests before they hatch in the spring. A special demonstration will be given by a USDA plant health safeguarding specialist. Volunteers will learn how to easily identify and destroy the eggs of this invasive species. You'll use your newly learned skills to seek out hidden egg masses and help us "beat the bug". Scraping tools will be provided. **Audience: ages 12+ through adult. Miles: ~2. Difficulty: easy-moderate, depending on location.**



# N♦A♦T♦U♦R♦E

## Winter Solstice Eve at Sunset

### Long Bridge Park

Friday, December 20 | 3:30 PM [Register Here.](#)

Bundle up and join Park Naturalist Gina DiMaio on the very last day of Autumn (aka Winter Solstice Eve) to prepare to welcome the arrival of astronomical winter. It may be the shortest day of the year, but the winter solstice holds the promise of longer days ahead. Just like nature, our personal lives also move through cycles and “seasons” - learn about winter ecology while embracing mindfulness in nature. Binoculars and cameras are encouraged! **Audience: all ages welcome. Miles: about 2. Difficulty: easy – flat natural terrain with some boardwalks and crushed stone.**  
**FREE - Registration is required.**

## Lecture: Birds & Bare Branches

### Moorestown Library

Friday, January 24 | 1:00 PM

Winter can seem bleak and drab with no leaves on the trees, but over 100 species of birds are present during the winter in Burlington County, (only about half are here during the cold months). Learn about the resident and migratory birds that are found in Southern NJ in the winter months in this photographic slide show depicting species from ducks to eagles to finches. Presented by Senior Naturalist Jen Bulava. **FREE - Registration is required. Register online through the Moorestown Library website calendar or by calling 856-234-0333.**

## Lecture: Hydrogeology of the New Jersey Coastal Plain

### Burlington County Lyceum of History & Natural Sciences

Wednesday, January 29 | 10:00 AM [Register Here.](#)

When you turn on the water in your house, do you ever ask yourself, “Where does this water come from?” This 1-hour lecture will describe the geology, hydrogeology, aquifers, and the water cycle of Burlington County and the New Jersey Coastal Plain. Participants will learn about groundwater withdrawal, and how urban and rural areas budget their water use. Presented by Pierre Lacombe, retired USGS hydrogeologist. **Audience: ages 18+ through adult. This facility is ADA-accessible.**  
**FREE - Registration is required.**

## Lecture: Life that Glows: UV-induced Visible Fluorescence

### Moorestown Library

Tuesday, February 11 | 1:00 PM

Discover an intriguing hidden world of glowing organisms found right here in New Jersey! Some objects, when subjected to shorter wave ultraviolet radiation, will emit another type of radiation with lower energy and longer wavelength in the visible spectrum. To find out what fluoresces in our area, Park Naturalist Jen Bulava started a series called “Life That Glows” where participants walk in the dark with special UV flashlights to find glowing life. This presentation displays the photographic observations from those outings and summarizes preliminary findings of Bulava’s research in this exciting new field to science, UVIVF. Presented by Senior Naturalist Jen Bulava. **FREE - Registration is required. Register online through the Moorestown Library website calendar or by calling 856-234-0333.**

## Lecture: Trees in Nature and Through History

### Burlington County Lyceum of History & Natural Sciences

Wednesday, February 26 | 10:00 AM [Register Here.](#)

Join Park Naturalist Gina DiMaio and Parks Historian Eric Orange for this interdisciplinary dive highlighting some of the most common and important tree species in southern New Jersey. See page 15 for more details.  
**FREE - Registration is required.**



# HISTORY

Burlington County Lyceum of History & Natural Sciences | 307 High Street | Mt. Holly  
Museum Hours: Thursday-Saturday, 10 AM - 4 PM | Sunday: 12 - 4 PM

## FOOTSTEPS INTO THE PAST

**FREE — Registration required.**

The Lyceum welcomes you to join us for the final session of our series of fun, interactive, educational programs for children and their families. The program includes a story, craft, and movement activities. Parent or guardian must be present. Watch for the return of Footsteps Into the Past in Spring 2025!

## Let's Celebrate

**Burlington County Lyceum**

**Saturday | December 21**

**10 AM: History Seekers**

**(5-8 years old) [Register Here.](#)**

**1 PM: History Hackers**

**(9-12 years old) [Register Here.](#)**

Celebrate the season with us as we explore the diverse ways we observe holidays. Hear "Let's Celebrate! Special Days Around the World" by Kate DePalma. Make winter themed crafts. And take part in our 'snowball fight' and penguin dance.

## History of Fashion Series

**Burlington County Lyceum**

**10:00 AM**

**Wednesday, December 18**

**Colonial/ Regency Period [Register Here.](#)**

**Wednesday, January 15**

**Victorian Era [Register Here.](#)**

**Wednesday, February 19**

**1920s—1950s [Register Here.](#)**

Today fashion choices are limitless. But this has not always been the case. Throughout American history, our fashion has transformed along with our opportunities and ideologies, both economic and social. Throughout this three part series, we will examine fashion beginning in the Colonial and Regency period, through the Victorian Era, and ending in the 1950s.  
**FREE - Registration is required.**



## History of Medford

**Burlington County Lyceum**

**Tuesday, January 21 | 7:00 PM [Register Here.](#)**

In conjunction with the National Society of the Colonial Dames in the State of New Jersey, Main Street Mount Holly, and The Rev War Alliance of Burlington County, join us for an author talk with Dennis McDonald and Zach Baer, authors of Medford Through the Lens. They will discuss their new publication and share with you their "Top 10" list of favorite photographs and the stories behind each image.  
**FREE - Registration is required.**

---

## BOARD GAMES at the LYCEUM 11:00 AM—3:00 PM

**Saturday, December 28 [Register Here.](#)**

**Saturday, January 25 [Register Here.](#)**

Join us at the Lyceum for Board Games! Bring your own board game and snacks. No alcohol is permitted. History themed/historical games preferred, but not required. Make sure games are friendly for all ages. Many games will be provided. Bring your family and friends to a day of games and fun!  
**FREE — Registration required.**

## Special Valentine's Day Date Night

**Friday, February 14 | 4:00 PM—8:00 PM [Register Here.](#)**

Join us for a special Valentine's Day board game night at the Lyceum. Bring your date (spouse, son/daughter, best friend) for an evening of fun! Games will be provided but you are always encouraged to bring your own to share too. Bring your own snacks. No alcohol is permitted.  
**FREE — Registration required.**



# HISTORY

Burlington County Lyceum of History  
& Natural Sciences

307 High Street | Mt. Holly



## Coldest Day of the Year Walk

Burlington County Lyceum  
Wednesday, February 5  
10:00 AM [Register Here.](#)

Join Eric Orange on this short walk from the Lyceum to the Shinn Curtis Log Cabin. The cabin was built in 1715 and was lost to history as successive owners added on to the structure until it was unrecognizable. Along the way we will discuss Mount Holly's 18th and 19th century architecture and history along High Street. We cannot guarantee it will be the coldest day of the year, but it will be cold, so dress warm. Round trip is 1 mile. **FREE - Registration is required.**

## Trees in Nature and Through History

Burlington County Lyceum

Wednesday, February 26 | 10:00 AM [Register Here.](#)

Join Park Naturalist Gina DiMaio and Parks Historian Eric Orange for this interdisciplinary dive highlighting some of the most common and important tree species in southern New Jersey. This presentation will explore their historic, cultural, and ecological implications. Humans have always had a special relationship with trees, from the ancient Druids to modern times trees have been a big part of economic and sometimes spiritual life. Burlington County is no exception, with a fantastically diverse ecosystem from Bass River to Bordentown. **Ages 12+ / ADA-accessible. FREE - Registration is required.**

## Afternoon Trivia at the Lyceum

Monday, December 9 | 2:00 PM [Register Here.](#)

Monday, January 6 | 2:00 PM [Register Here.](#)

Monday, February 3 | 2:00 PM [Register Here.](#)

Join Marisa Bozarth, Museum Curator of History, for a fun, relaxed, afternoon of trivia. Each month will feature three categories relating to history, art, science, literature, and pop culture. BYOS (Bring Your Own Snacks). **FREE — Registration required.**



Photo by Jen Bulava

Friends of the Mansion At Smithville  
present Docent-guided Holiday  
Tours of Historic Smithville  
Mansion

## A Victorian Christmas in Smithville

Enjoy the Historic Smithville Mansion in all of its holiday glory during the Christmas season.

## Holiday Daily Tours

Thursdays, Fridays, Saturdays & Sundays\*

December 5—December 29

12:00 PM, 1:00 PM & 2:00 PM

Adults \$10.00 Seniors & Students \$8.00.

## Holiday Candlelight Tours

Wednesday, December 4 | Thursday, December 12

Thursday, December 19 | Friday, December 27

7:00 PM & 7:30 PM

\$20.00 per person. Reservations are required and can be made online at: [www.smithvillemansion.org](http://www.smithvillemansion.org).

For more information about events, email: [sleinbach@smithvillemansion.org](mailto:sleinbach@smithvillemansion.org)

\* The Mansion will be closed 12/8, 12/24 & 12/25, 2024 and January and February, 2025



SCAN ME

# HISTORY

Historic Smithville Park | 803 Smithville Road | Eastampton



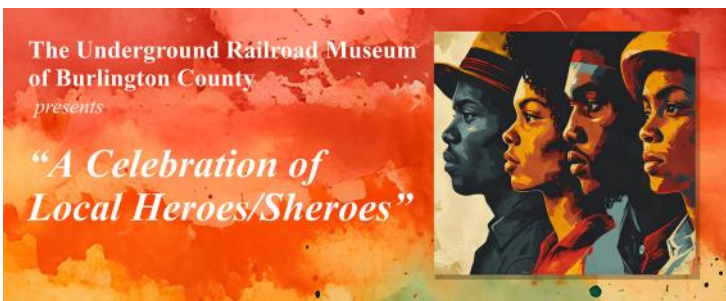
## Historic Underground Railroad Museum of Burlington County New Jersey

### Winter Events

#### Kwanzaa Festival

Saturday, December 28 | 11:00 AM - 4:00 PM

JFK Center, 429 John F Kennedy Way, Willingboro, NJ 08060



#### Black History Month Programs:

The Underground Railroad Museum of Burlington County presents: "A Celebration of Local Iconic Heroes/Sheroes"

Friday, February 21 | 6:00 9:00 PM

Rowan College at Burlington County

900 College Cir, Mt. Laurel, NJ 08054

We continue to tell the story for the silenced and erased 'his stories', 'her stories' and 'their stories' giving voice to the unfound and unarchivable. This year we place emphasis on iconic contributions by historians who have impacted Burlington County.

#### 2025 Inductees

- Reverend Walter A. Rice, Founder Manual Training and Industrial School ("MTIS") Founder
- John Medley. MTIS Advocate
- Clarence Jones, Martin Luther King Attorney
- Senator Troy Singleton
- James A. Cotten, Tuskegee Airmen
- Superior Court Judge Marie White Bell

Saturday, February 22 | 10:00 AM - 12:00 PM

Open House/ Private Reception for Inductees, Family & Friends

Historic Underground Railroad Museum

Historic Smithville Park



Photo by Anthony Jacobsen

The museum offers visitors a visual presentation of the Underground Railroad experience in America, with emphasis on New Jersey and Burlington County where the Underground Railroad flourished before the Civil War. The museum is an independent organization. Please visit <http://www.hugrrmbc.org> or the Underground Railroad Museum Facebook page for more details and tour information.

### Mission Statement

The Underground Railroad Museum of Burlington County is dedicated to keeping history alive—connecting the past to the present through the acquisition and presentation of historical artifacts and materials while giving voices to history through creative expression in art, music, and the "spoken word"

All audiences are welcome, especially those who have had limited access to historical truths.

#### Hours of Operation

Friday (Private Tours) 12PM - 4:00 PM

Saturday and Sunday 12 PM - 4:00 PM

To schedule a private tour please email [info@hugrrmbc.org](mailto:info@hugrrmbc.org) or call 609-914-1675

Lighting the way with truths that connect the past with the present.

# Art Exhibits, Classes & Events

Historic Smithville Park | 803 Smithville Road | Eastampton

Photo by Anthony Jacobsen



## Smithville Mansion Annex Gallery

*Located upstairs inside the historic Smithville Mansion, the gallery features juried and themed fine art and photography exhibits and hosts the annual Burlington County Teen Arts Exhibit and Annual Juried Art Show.*

Gallery Hours: Thursday-Saturday: 10 AM - 4 PM  
Sunday: 12 - 4 PM

## 48th Annual Juried Art Show

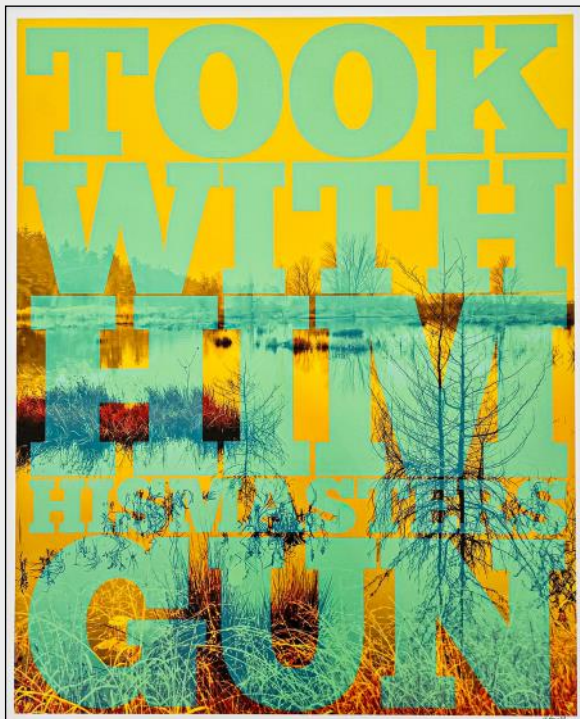
**October 17, 2024 – January 4, 2025**

The most anticipated art show of the year welcomes outstanding artists from Burlington County and beyond to be featured at the Annex Gallery fall and winter seasons. Year after year, artists who enter this show continue demonstrating their creativity and innovation and highlighting their best works of art.

This year, we welcome everyone back into our galleries and are excited to showcase all the spectacular art. Pictured: 3 prize winners.

Best in Show: Gary Jones, 2nd Place: Kri Rose Akiyama, 3rd place: Christine Wagner

After this exhibition, the Annex Gallery will be closed for repairs and updates until May 10, 2025.



Left to Right: Digital Art by Gary Jones

Ink Drawing by Kri Rose Akiyama

Painting by Christine Wagner



**Follow the Arts!**



# Art Exhibits, Classes & Events

Historic Smithville Park | 803 Smithville Road | Eastampton

Photo by Anthony Jacobsen



## Worker's House Gallery

*Built between 1865 and 1870, this duplex, nestled in The Smithville Village, housed H.B. Smith's workers along with their families during the factory's operation. Exhibits focus on handcrafts and group exhibits.*

Gallery Hours: Thursday-Saturday: 10 AM - 4 PM  
Sunday: 12 - 4 PM

## Craft in the Valley: A sampling of Peters Valley Gallery Artists

**October 10 - January 11, 2025**

Peters Valley School of Craft is located in the beautiful and historic Delaware Water Gap National Recreation Area and offers adult workshops, artist residencies, special events, and gallery exhibitions in an effort to enrich lives through the learning, practice, and appreciation of fine craft. The Gallery features handmade work from over 250 American-based craftspeople. This showcase features a sampling of the kinds of pieces you will find in their retail gallery. Shop from handmade ceramics, wearable textiles, blacksmithing, jewelry, prints, glass, and more!

## Art of the Kellys

**January 23, 2025 - May 10**

Siblings, Megan and Luke Kelly, who grew up sketching together as children continue to create art that exemplifies their chosen interests. Megan strives to capture glimpses of nature in paint and clay. Luke illustrates classical designs that communicate meaningful solutions to modern architectural challenges.

Burlington artist Megan Kelly is a multifaceted artist working with several mediums. She holds a bachelor's in marine science and a master's in data from Stockton University. She expresses her art through experimenting with new painting techniques and creating ceramics in the JBMDL ceramics center. Bringing her friend's dreams to life via display pieces for their loved ones is her passion.

Luke Kelly is currently in his fourth year of study at The Catholic University of America with a concentration in classical and traditional architecture. The subjects of his watercolor renderings are the architectural spaces he discovers while traveling throughout Europe.



Fiber Art by Erika Hewston



Watercolor by Luke Kelly



Ceramic by Megan Kelly

# Art Exhibits, Classes & Events

150 High Street | Mount Holly

Photo by Anthony Jacobsen



## Warden's House Gallery

*Completed in 1888, this house, which is attached to the Historic Prison Museum, once served as the warden's living quarters. It is the permanent home of the Hugh Campbell collection and also highlights works by emerging artists.*

Gallery Hours: Thursday-Saturday: 10 AM - 4 PM

Sunday: 12 - 4 PM

## Josh Torrito: What's Left in the Box

**October 3, 2024 - January 4, 2025**

While viewing this exhibit, people are confronted with the immediate impression of power and a new way of experiencing the temperament and work ethic of the artist. The wonder of color usage taken from the natural world is now bent to the prism of abstraction. Each piece is filtered through the mind of an artist who is starting again. Viewers are encouraged to take this journey with the artist where they are challenged to face new emotions that arise with surfacing memories. This exhibition shows that abstraction has never been more exciting and can be more thought-provoking than one could have ever realized.

## Hugh Campbell Collection: From the Vault IV

**January 9—March 29**

Hugh H. Campbell was an artist, published author, and philosopher who lived an extremely minimalistic life right here in Mt. Holly. Much of his collection has been stored away, deep within Burlington County's archives. This exhibit will grant you a unique opportunity to view rare and never seen before art. The exhibit will feature paintings, sketches, pastel and chalk drawings, as well as early drawings of when Hugh began to learn and practice his art.

## Hugh Campbell Collection: A Local Odyssey

**2<sup>nd</sup> Floor Exhibit (ongoing)**

Hugh H. Campbell was a man of many talents. He expressly captured his own view of Mount Holly and surrounding areas through the self-taught use of his paintbrush. Sometimes called the "Van Gogh of Mount Holly" he painted voraciously and sold his canvases regularly along a wall on High Street. This shifting exhibit includes artifacts and select works from the Hugh H. Campbell archives, including newly acquired works!



Painting by Josh Torrito



Painting by Hugh Campbell

# Art Exhibits, Classes & Events

## Hooks 'N Needles Beginners Instruction to Crochet

Smithville Park Building 6/7 Conference Room

Classes will be offered in pairs.

2 Thursdays each month | 5:00 PM—6:00 PM

Dec 5 & 13 [Register Here.](#) & [Here.](#)

Jan 16 & 30 [Register Here.](#) & [Here.](#)

Feb 13 & 27 [Register Here.](#) & [Here.](#)

FREE—Registration Required

Have you been looking to pick up a new hobby or found yourself wanting to learn how to Crochet or maybe you just need to brush up on your skills? Join Burlco Parks own Ashley Park to learn all the basics needed to begin crocheting during this Instructional Class! We will teach you how to read patterns, hold your crochet hook and yarn, make your basic stitches, & learn to crochet a blanket pattern. Just bring your supplies and we will do the rest! **NOTE:** This instructional class is for Ages 18 years and older. This is offered as two 1-hour classes that will meet prior to the Hooks N Needles Club.

YOU MUST SIGN UP FOR BOTH CLASSES IN THE PAIR.\*\*



## Hooks 'N Needles Club

Smithville Park Building 6/7 Conference Room

Thursdays | 6:00 PM—8:00

Dec 5, 19 | Jan 16, 30 | Feb 13, 27

FREE—Registration Required [Register Here.](#)

Do you enjoy Crocheting, Knitting, or Weaving? Join our Hooks & Needles Club led by Burlco Parks own Ashley Park. Every other Thursday night, work on projects old or new and socialize with other crafters, share great conversations, patterns, and ideas. Bring your own supplies/materials and we'll provide the space! Light refreshments will be served. **NOTE:** This is not an instructional group. Open to Ages 16 & older. Anyone under 18 years of age must be accompanied by an adult for the duration of the program.



## Workshop: Paper Speak Collage

Worker's House Gallery

Tuesday, January 14 | 5:30 PM—7:30 PM [Register Here.](#)

Free | Adults & Teens 12 + Registration Required.

This workshop will use cut and torn paper to express a theme. Bring your own paper scraps and create a collage layout to make conscious design choices through color, object or words. Suggestions for paper; magazine, old notes or photos, wrapping paper, discarded books or music. Excellent way to recycle holiday cards! We will provide paper to accompany your pieces or start a fresh idea. Any level of artist will enjoy this collage process and all material will be provided.

Bring: Personal paper scraps that speak to you!

Instructor: Leeannwyn Stoner

## Explore Drawing: Modern Masters Series

Worker's House Gallery

Tuesdays 5:30 PM—7:00 PM

January 28: [Register Here.](#)

*Keith Haring — Line Drawing*

February 25: [Register Here.](#)

*Edward Degas — Pastel*

Free | Adults & Teens 12 +  
Registration Required

Each month use drawing to explore a Modern Masters of Art with a different theme and medium. After a short review of the Modern Master style and then create your own work in that style using drawing as a basis. All materials provided and any artistic level is welcome. Instructor: Leeannwyn Stoner





# Burlington County AGRICULTURAL CENTER

500 Centerton Road | Moorestown, NJ 08057

## Kids in the Garden Classes & Young Chefs Workshops

### Luminaries with a Loved One

**Saturday, December 7**

**1:30 PM**

\$45 | Kids! Grab your favorite adult and come to the cozy farmhouse! We'll get creative and make our own winter luminary while wearing our favorite snuggly PJs (PJs not mandatory). While each of us is creating our own reusable luminary we'll enjoy hot chocolate and light refreshments. Keep your luminary for yourself or give it as a gift. Each registration includes one adult and one child between the ages of 5 and 11. An additional child can be added for an additional \$20. All supplies are included with the registration fee.



### Kids in the Garden: Animals in Winter

**Saturday, January 18 | 1:00 PM**

\$25 | How do animals survive the winter? We will engage in activities and games to learn and experience how animals adapt, hibernate, migrate, and camouflage. Weather permitting, we will spend a little bit of our 90 minutes together outdoors, so bundle up! Ages 5-11

### Kids in the Garden: Animals Track Fun

**Saturday, February 22 | 1:00 PM**

\$25 | Can you tell an animal by its tracks? Explore, make, and create assorted animal tracks found here in New Jersey. We'll play games, have a scavenger hunt, and do a make and take craft. Weather permitting, we will spend a little bit of our 90 minutes together outdoors so bundle up! Ages 5-11

### Young Chefs: Favorite Foods Cooking Workshop

**Sunday, January 26 | 12:30 PM**

\$45 | Get ready for an exciting culinary adventure with our hands-on cooking class just for kids! In this fun-filled introduction to cooking, young chefs will not only learn to prepare their favorite dishes but will also explore the delights of healthy eating. As they create their own delicious, whole food-based meals, they'll gain confidence and independence in the kitchen. For this class we will create our own Pizza + Dessert Parfaits! Our child-friendly utensils and appliances are designed specifically for the 5-10-year-old age group, making for a safe and enjoyable cooking experience. Most food allergies and dietary restrictions can be accommodated with advance notice, and all recipes are always nut free. Join us and see your child's love for cooking and healthy eating grow! Allergens: gluten, dairy

### Young Chefs: Sweet Treats Cooking Workshop

**Sunday, February 9 | 12:30 PM**

\$45 | Join us for this Valentine's Day themed cooking class where you'll get to create popular V-day sweet treats in a healthier way and discover how delicious healthy eating can be! In our hands-on class, kids will whip up tasty, wholesome meals while building their kitchen confidence and skills. We'll be making Oatmeal Cookies + Smoothie Bowls! Using kid-friendly tools and appliances designed for 5-10-year-olds, kids will have a blast preparing their culinary creations in a safe and exciting environment. Plus, parents can feel good knowing your kids are enjoying nutritious, nut-free recipes that make healthy eating fun and festive. Allergens: gluten, wheat, dairy



To register, visit: [www.burlcoagcenter.com/class-schedule/](http://www.burlcoagcenter.com/class-schedule/)



# Burlington County AGRICULTURAL CENTER

500 Centerton Road | Moorestown, NJ 08057

## Culinary Arts Classes & Workshops

### Easy Breezy Weekday Dinners: Crispy Cod over Summer Squash

**Tuesday, December 3 | 6:00 PM**

\$60 | This series shows off recipes that are simple to make but delicious enough for a party crowd. Let's add another delicious fish recipe to the meal lineup with our Crispy Cod served on a bed of tangy summer squash. You will learn how to get that crispy snap to your fish, how to bring a depth of flavor to the squash and how to make the quinoa and arugula base that everything is served upon. We'll eat together in class but bring a container for any leftovers!

### Tempura from Scratch

**Thursday, December 5 | 6:00 PM**

\$55 | Tempura is believed to have its origins in the 16th century when Portuguese missionaries and traders introduced deep-frying techniques to Japan. Japanese chefs adapted these techniques over time by using a lighter batter to create a crispier texture and more delicate flavors. Tempura techniques are not difficult to master, and practically anything can become tempura. Join us to learn the basics of tempura. Working in teams, we'll create that light tempura batter, prepare our ingredients and then learn the proper frying style. This can be a vegetarian class easily. We will have shrimp on hand but will keep it separate.



### Edible Holiday Cranberry Wreath

**Tuesday, December 10 | 6:00 PM**

\$55 | Come to the Farmhouse Kitchen to create a beautiful edible cranberry wreath. Fill the kitchen with warm holiday scents as we mix our dough for rising and make a quick cranberry jam for the filling. You will cut and twist your dough to create an edible showstopper. We will talk about the many ways to use cranberries throughout the year, not just for holidays. Because of the reality of dough having to rise and rest, you will take your wreath home to bake, and we will enjoy a pre-baked wreath together in class while we work.

### Holiday Baking: Chocolate Crinkle Cookies

**Tuesday, December 17 | 6:00 PM**

\$55 | Find your holiday spirit baking a Burlington County Farm Fair 1st place winning cookie recipe! The classic chocolate crinkle cookie is a winter staple for many households. You'll be hands on making dough and rolling crinkles while wondering if you'd rather gift them to someone you love or eat them all in class. We'll rediscover the nostalgia of the holiday kitchen talking about our favorite family recipes, sipping a hot beverage, and snacking on cookies. Feel free to bring a copy of your favorite holiday cookie recipe or cookbook. Ages 10 +  
Allergens: gluten, dairy

To register, visit: [www.burlcoagcenter.com/class-schedule/](http://www.burlcoagcenter.com/class-schedule/)



# Burlington County AGRICULTURAL CENTER

500 Centerton Road | Moorestown, NJ 08057

## Culinary Arts Classes & Workshops



### Winter Canning: Cold Comfort Jelly

Tuesday, January 14 | 6:00 PM

\$55 | Winter is upon us! There's no better feeling than being prepared for whatever the season throws at us. Learn how to make a cold comfort jelly, a soothing and tasty winter jelly that you can add to warm tea to soothe the throat or spread on your morning toast. We will be water bath canning our jelly because it makes a thoughtful gift for friends and neighbors. Our cold comfort jelly will include ingredients like ginger and lemon that help fight the common cold. Ages 15 +  
Allergens: allium

### Plump Pierogies

Monday, January 20 | 6:00 PM

Tuesday, January 21 | 6:00 PM

\$55 | Every culture has its comfort foods. Join us in the Kitchen for a local favorite –homemade pierogies. We'll get hands on making the dough and the filling for our pierogies. Working together, we will shape, fill, cook and taste our creations. We'll send you home with leftovers.

Note: the same program is presented each night.

### Luxurious Salt Scrubs

Wednesday,

January 22 | 3:00 PM

\$50 | We all know that winter can wreak havoc on your skin. And if you spend a lot of time in the kitchen, you've

probably noticed that all that hand washing makes it even worse. Did you know that with a few simple ingredients you can make your own skin-enriching salt scrub? In this class we're using items found right in your kitchen to pull together an easy (and impressive) skin treatment to help you slough off that dry skin and help nourish it back to life. Ages 10 +



### Playing with Phyllo: Baklava Cigars

Wednesday, January 22 | 6:00 PM

\$55 | Do you love the rich, flakey layers of baklava, but making it seems so...daunting? Let's roll it instead! In this class we're making Saragli, or baklava cigars. Using a "burrito roll" technique, you'll work with phyllo and all the baklava ingredients to make and bake these easy, decadent cigars to enjoy at home. Ages 12 +  
Allergens: gluten, wheat, dairy, nuts



To register, visit: [www.burlcoagcenter.com/class-schedule/](http://www.burlcoagcenter.com/class-schedule/)



# Burlington County AGRICULTURAL CENTER

500 Centerton Road | Moorestown, NJ 08057

## Culinary Arts Classes & Workshops



### Fire Cider

**Tuesday, January 28 | 6:00 PM**

\$55 | Fire Cider is a spicy, delicious folk tonic made by infusing apple cider vinegar with powerful immune supporting, lymph moving, circulation stimulating, antioxidant-rich and digestion enhancing fresh herbs and spices.

Just a couple of spoonfuls a day will help support your immune system and overall health throughout the year but especially during cold and flu season. Come to the Farmhouse Kitchen and learn to make your own from our flavor bar! We'll send you home with a jar for the season. Ages 15 + Allergens: alliums, sulfites (vinegar)

### Winter Canning: Cinnamon Spiced Apples

**Tuesday, February 4 | 6:00 PM**

\$55 | The aroma of cinnamon baking with apples on a cool winter day is something to warm your soul. Come to the Farmhouse Kitchen to learn how to make cinnamon-spiced apples and then hot water bath can them to enjoy the taste of warm apple pie all winter long. We will get hands on preparing your apples and stepping through the process of water bath canning. While our apples to cook, we'll enjoy a spiced apple dessert made by Miss Amanda and share a variety of ideas and recipes for spiced apples. Ages 15 +

### Superbowl Cheeseballs

**Wednesday, February 5**

**6:00 PM**

\$55 | It's the stunner, the star of the appetizer buffet. Guests gravitate to it, and it never lasts. It's the cheese ball!

Sure, you can buy a premade ball of smooth and salty cheese, studded with nuts, sometimes swirled with telltale pink port wine, but what if you made your own? In this class, we'll be using ingredients - traditional and outlandish - to create your very own cheese ball to take home. Belly up to the flavor bar to create your custom game day star. Ages 10 + Allergens: dairy, nuts, (fish, opt.)



### Elderberry Syrup and Lemon Thyme Cough Drops

**Tuesday, February 11**

**6:00 PM**

\$55 | Elderberries have been used for medicinal purposes for generations. Learn to make this well-known

folk remedy for boosting the immune system to fight off illness and get well quickly. Elderberries are the fruit from the Sambucus nigra plant. They contain antioxidants (specifically anthocyanidins), antivirals, and nourishing vitamins such as Vitamin A, Fiber, Calcium, Iron, Potassium, Vitamin C, and Folate. You will make your own elderberry syrup, customized from our flavor bar, bottle, and take it home to help heal you throughout the season. During class we'll discuss alternative ways to use the syrup other than just straight up. While our syrup is steeping, we'll make lemon thyme cough drops to soothe the sore throats that come with winter weather.

Ages 15 + Allergens: alliums



To register, visit: [www.burlcoagcenter.com/class-schedule/](http://www.burlcoagcenter.com/class-schedule/)



# Burlington County AGRICULTURAL CENTER

500 Centerton Road | Moorestown, NJ 08057

## Culinary Arts Classes & Workshops

### Focaccia Pizza and Mozzarella Stretch

Wednesday,  
February 12  
4:00 PM

\$55 | In this class you'll start by making a quick and easy focaccia dough. While your dough is rising, you'll stretch curd into fresh, tender mozzarella and choose your toppings. You'll spread your pizza with your mozz and other goodies, then take to bake at home. Ages 12 + Allergens: gluten, wheat, dairy, (allium, nightshades, fish, opt.)



### Make Your Own: Exquisite Extracts

Tuesday, February 25 | 6:00 PM

\$55 | Add flavor power to your baking! Now is the time to replenish your extracts for next year. Join us at the farmhouse to make and bottle a classic vanilla extract along with a second more unusual flavor. We will talk about differences in bases and quality of ingredients as we create our batches. After, we'll jar and label them for you to take home to steep for gifts or for your own pantry. Ages 12 + Allergens: Alcohol



## Gardening & Horticulture Workshops

### Backyard Chickens 101: Scoop the Coop

Thursday, January 30 | 6:00 PM

\$25 | If you are thinking about getting backyard chickens, this is the class! Learn whether keeping hens is the right move for you from local expert, Jaclyn Ricci. In this class we discuss the benefits of having backyard hens for composting, sustainability, and permaculture. Discover how hens help with insect control and provide wonderful fertilizer for the garden while significantly decreasing food waste in trash. Learn why towns all over South Jersey are modifying their old ordinances to allow backyard hens and put those hens to work in your yard!



### Backyard Chickens 201: The Basics of Raising Backyard Hens

Thursday, February 20 | 6:00 PM

\$25 | You decided you want Backyard Chickens! Good for you. Now, how do you do that so that your birds are safe and healthy, your neighbors are happy, and you are free to enjoy the benefits of owning chickens? In this class, Jaclyn Ricci, the vice chair of Camden County Chickens and leader of Merchantville Backyard Chickens, will discuss the benefits of backyard hens for composting and sustainability, along with the educational information specific to raising chickens in a suburban setting. Feed, health, and coop requirements that satisfy local community requirements are covered.

To register, visit: [www.burlcoagcenter.com/class-schedule/](http://www.burlcoagcenter.com/class-schedule/)

# RNC Rancocas Nature Center

794 Rancocas Road, Westampton, NJ 08060 | [www.rancocasnaturecenter.org](http://www.rancocasnaturecenter.org)

## EVENTS & PROGRAMS FOR ALL AGES REGISTRATION REQUIRED



### LONGWOOD GARDENS CHRISTMAS BUS TRIP

Wednesday, December 4

10:30 AM to 7:45 PM

Our This holiday season, experience the magic of A Longwood Christmas as you never have before—made even more spectacular with the opening of [Longwood Reimagined](http://LongwoodReimagined). From the sprawling new West Conservatory to imaginative new outdoor landscapes—you can enjoy the sights and sounds of this favorite winter tradition. Indoor and outdoor displays are infused with color and lights, thousands of seasonal plants exquisitely decorate the Conservatory, and sounds of the season resonate throughout. Arrival at the Gardens is scheduled for 12 p.m., giving plenty of time to take in all that is offered, including the after-dark light show. Visit [www.longwoodgardens.org](http://www.longwoodgardens.org) for details of the holiday displays. The trip is sponsored by the Rancocas Nature Center and includes charter bus transportation (from and to Prospector's, Mt. Laurel) and entry ticket. Cost: \$88/per person (our pricing is very competitive). Registration for this event is available on the Rancocas website at [www.rancocasnaturecenter.org](http://www.rancocasnaturecenter.org) Payment secures the registration, and all sales are final. You can also register by mailing a check to Rancocas Nature Center, 794 Rancocas Road, Westampton, NJ 08060 or by stopping at the center. Final information will be sent to all registrants prior to the event.

### Interpretive Trail Hike

Sundays | 1:30 to 2:30 PM

December 1, January 5, & February 2

Join Rancocas Nature Center for an interpretive hike through our varied habitats. It's a great way to become familiar with the trails. Bring a camera and/or binoculars as we'll be sure to stop at scenic spots along the way. The hike is suitable for all ages 5+, so bring a child carrier to transport younger children. Registration is limited to 20 participants. Inclement weather cancels. FREE — FRNC membership or donation suggested. Register at [www.rancocasnaturecenter.org](http://www.rancocasnaturecenter.org)



### MAPLE SUGARING

Sunday, February 16

12:30 to 3:30 PM (Staggered start times)

What a tasty way to spend a winter afternoon! Bring the whole family and enjoy a program about maple sugaring, the oldest continuous industry in North America. On this self-guided hike, you'll follow a map and visit multiple interactive stations along the Rancocas trails. Learn about the Sugar Maple tree and the history of maple sugaring, observe a tapping demonstration, and enjoy a maple syrup tasting. To ward off the chills, we'll have an old-fashioned campfire burning. Cost: RNC members, \$9/person, \$30/family (limit 5); nonmembers, \$11/person, \$40/family (limit 5). **Start times are staggered— Register online for your time slot at [www.rancocasnaturecenter.org](http://www.rancocasnaturecenter.org)**

# Rancocas Nature Center

794 Rancocas Road, Westampton, NJ 08060 | [www.rancocasnaturecenter.org](http://www.rancocasnaturecenter.org)

## ••••• CHILDREN'S PROGRAMS ••••• REGISTRATION REQUIRED

### Tails & Trails (Ages 3+)

Wednesdays | 10:30 to 11:30 AM

Dec 4, 11, 18 | Jan 8, 15, 22 & 29 | Feb 5, 12, 19, & 26

The Rancocas Nature Preserve is beautiful throughout the seasons! Join us for this free family-friendly children's program. Each session starts with a nature-themed storybook, then proceeds with a hike on the trails to explore Rancocas during the colder months. This program is geared toward families with children ages 3 years and up. Babies in backpacks are welcome! Program is free (with a current Rancocas membership). Inclement weather cancels. Register at [www.rancocasnaturecenter.org](http://www.rancocasnaturecenter.org)

### Woody Wonderers (Ages 3-5)

Fridays | 10:00 AM to 12:00 PM

Dec 6, 13 | Jan 10, 17, 24 & 31 | Feb 7, 14, 21 & 28

Parental participation required.

Let's get out and explore the outdoors and discover the wonders of nature! Each class includes a story, a nature exploration, student-led inquiry, and free play. Based on the "forest school" concept, this outdoor education model focuses on student interactions with natural spaces and offers hands-on learning in a woodland environment. This program is mostly outdoors and will take place with most types of weather including light drizzle and the cold. The exception is heavy rain/winds, thunderstorms, or other unsafe weather. Cost: \$15/per child/per class, 5 or more classes for \$12 per class (with a current Rancocas membership). Register at [www.rancocasnaturecenter.org](http://www.rancocasnaturecenter.org)

### Homeschoolers Fun

Fridays: Ages 6-13)

Fridays | 10:00 AM to 12:00 PM

Dec 6, 13 | Jan 10, 17, 24 & 31

Feb 7, 14, 21 & 28

Let's get out and explore the outdoors and discover the wonders of nature! Join us for this conservation-based nature program where children will observe, record, and discover the natural world around them. Children learn and use the "Leave No Trace" principles as they explore the various habitats during the fall season on the Rancocas Nature Center Preserve. This program is mostly outdoors and will take place with most types of weather including light drizzle

and the cold. The exception is heavy rain/winds, thunderstorms, or other unsafe weather. Cost: \$15/per child/per class, 5 or more classes for \$12/per class (with a current Rancocas membership). Register online at [www.rancocasnaturecenter.org](http://www.rancocasnaturecenter.org)



## SANTAQUEST

Sunday, December 8 | 12:00 to 3:00 PM (Staggered start times)

Our The Rancocas Nature Center is one of Santa's favorite stopover spots, and he joins us again this year. The preserve is hosting a new guest, and Santa is excited to check it out. Share in the fun quest to find Santa out on the Rancocas trails. The nature center's grounds, with its diverse habitats, is the perfect place to explore. Follow the clues at multiple stations along the way. Bring your imagination and join us for our annual fun-filled holiday treat and self-guided adventure as we look for signs of Santa. Enjoy hot chocolate and a campfire back at the center and support our bake sale. Bring a camera or cell phone to document this unique Santa sighting. Cost: Rancocas members, \$9/person, \$30/family (limit 5); nonmembers, \$11/person, \$40/family (limit 5). **Start times are staggered— Register online for your time slot at [www.rancocasnaturecenter.org](http://www.rancocasnaturecenter.org)**

# Rancocas Nature Center

794 Rancocas Road, Westampton, NJ 08060 | [www.rancocasnaturecenter.org](http://www.rancocasnaturecenter.org)

## ••••• TEEN & SCOUT PROGRAMS ••••• REGISTRATION REQUIRED

### Teen & Scout Conservation Volunteer Days (Ages 13-17)

Saturday, Dec 7 | 9:00 AM to 12:00 PM

Sunday, Jan 12 | 12:30 to 3:30 PM

Saturday, Feb 1 | 1:00 to 4:00 PM

The Rancocas Nature Center has monthly supervised stewardship conservation project volunteer opportunities. It's a great way for scouts and other youth 13 to 17 years-old to get out into nature and accumulate service hours. Parental consent is required, and parents are welcome to help as well. Activities vary depending on the season, but often include removal of invasive species and mulching native plant enclosures and gardens. Volunteers should bring water, work gloves, and dress in work clothes, including appropriate footwear. Upon request, letters can be provided for youth needing proof of service for Scouts, 4-H, Honors Society, etc. Details and sign-up links can be found on the Rancocas Nature Center website at [www.rancocasnaturecenter.org](http://www.rancocasnaturecenter.org)



### Scouting America Merit Badge: Textiles

(1-Day workshop)

Sunday, Jan 26

11:00 AM to 4:00 PM

Learn about the fine points of outdoor gear by taking the Textile Merit Badge with Rancocas accredited counselors. There is an old Scandinavian saying: "There is no such thing as bad weather-- only bad clothing choices." When you learn about various fibers, fabrics and their properties, you'll be able to make better choices about your outdoor clothing and gear. Additionally, a better understanding of weaving and other fiber crafts, increases your important survival skills. A certified Merit Badge counselor together with specialist colleagues will lead you through the requirements for this badge in a one-day outdoor workshop. Bring a bagged lunch. Cost: \$40/ per scout (includes materials for weaving). Register by emailing [education@rancocasnaturecenter.org](mailto:education@rancocasnaturecenter.org).

### Scouting America Merit Badge: Chemistry

(2-Day workshop)

Saturday, Feb 1 | 8:30 AM to 12:30 PM

Saturday, Feb 8 | 8:30 AM to 12:30 PM

Join Rancocas certified Merit Badge counselors for this revamped two-day workshop incorporating the updated Scouting BSA 2024 requirements. The chemistry badge explores how substances react with each other, how they change, how certain forces connect molecules, and how molecules are made. Scouts must attend both sessions, will be expected to complete requirement 7B on their own, and participate fully in the workshop. Most appropriate for scouts ages 13 and above. Cost: \$40/per scout. Register by emailing [education@rancocasnaturecenter.org](mailto:education@rancocasnaturecenter.org).



### Maple Sugaring for Scouts

Sunday, March 2 | 12:30 to 3:30 PM

(Staggered start times)

What a tasty way to spend a winter afternoon! Bring the whole family and enjoy a program about maple sugaring, the oldest continuous industry in North America. On this self-guided hike, you'll follow a map and visit multiple interactive stations along the Rancocas trails. Learn about the Sugar Maple tree and the history of maple sugaring, observe a tapping demonstration, and enjoy a maple syrup tasting. To ward off the chills, we'll have an old-fashioned campfire burning. Cost: \$15/per scout/accompanying adult. **Start times are staggered— Register online for your time slot at [www.rancocasnaturecenter.org](http://www.rancocasnaturecenter.org)**



# Rancocas Nature Center

794 Rancocas Road, Westampton, NJ 08060 | [www.rancocasnaturecenter.org](http://www.rancocasnaturecenter.org)

## ••••• **ADULT & TEEN PROGRAMS** ••••• SUITABLE FOR INTERESTED TEENS | REGISTRATION REQUIRED

### **Seasonal Stroll**

(suggested ages 55+)

Second Fridays | 10:30 AM

Dec 13, Jan 10, & Feb 14

Meet at Rancocas Nature Center Parking Lot

Fourth Fridays | 10:30 AM

Dec 27, Jan 24, & Feb 28

Meet at Rancocas SP-Westampton Parking Lot

Join a Rancocas staff person for a 45 minute to 1 hour guided stroll observing the winter season in the Rancocas Nature Preserve and Rancocas State Park's meadows, streams/creek and woodlands on our easier trails (mostly flat ground, some roots). Inclement weather cancels. FREE - FRNC membership or donation suggested. Register at [www.rancocasnaturecenter.org](http://www.rancocasnaturecenter.org)

### **Hump Day Afternoon Hikes**

(Ages 18+)

Wednesdays | 2:30 to 4:00 PM

Dec 4, 11 & 18 | Jan 8, 15, 22 & 29 | Feb 5, 12, 19 & 26

In the winter our Hump-day hike continues to be in the afternoons for better light. If you like to hike, but don't like doing it alone, come on out for a brisk, intermediate ability hike (with multiple elevation changes) in nature—the perfect way to get some exercise incorporated into your day while enjoying the weekly changes you observe as the season progresses. Inclement weather cancels. The program is free — FRNC membership or donation suggested. Register at [www.rancocasnaturecenter.org](http://www.rancocasnaturecenter.org)

### **Weekday Bird Walk at Rancocas**

Thursday, Dec 5 & Jan 16

9:00 to 10:00/10:30 AM

Join Audrey Dorofy on the

Rancocas Nature Center

grounds in search of birds

(our local residents) and we

hope to see migrants passing

through. Bring a water bottle

and binoculars. Let us know ahead of time if you would

like to borrow a pair. Dress to walk on hard sand or gravel

with exposed roots, hilly terrain, and a mix of wooded

and open areas. This is a relaxed pace, one-to-one-and-a-

half-hour walk. All skill levels are welcome. Program is

free; FRNC membership or a donation is suggested.

Register at [www.rancocasnaturecenter.org](http://www.rancocasnaturecenter.org)



### **Saturday Guided Walk**

(Ages 14+)

Saturdays | 10:30 to 11:30 AM

Dec 21, Jan 18 & Feb 15

Studies show that taking a walk in a natural area is good

for your physical and mental health. Adults and

interested teens can join Rancocas Nature Center for a

Saturday guided hike in the preserve. Inclement weather

cancels. FREE - FRNC membership or donation suggested.

Register at [www.rancocasnaturecenter.org](http://www.rancocasnaturecenter.org)

## **ESCAPE ART SERIES (AGES 16+)**

### **Seasonal Stitchery & Snippets of Holly**

Sunday, Dec 15 | 1:30 to 3:30 PM

Sign up for this workshop with teacher naturalist Robin Sperry and learn how to cross stitch—one of the easiest forms of embroidery. We'll use a simple pattern

inspired by the American Holly tree to create a holiday ornament or colorful

mason jar band. And while working on the project, Robin will share fun facts

about this interesting native species that is prolific in the Rancocas preserve.

Cost: \$25/per person (includes all needed supplies and materials). Register at

[www.rancocasnaturecenter.org](http://www.rancocasnaturecenter.org)



••••• **ADULT & TEEN PROGRAMS** •••••  
SUITABLE FOR INTERESTED TEENS | REGISTRATION REQUIRED

## New Year's Day Hike (Ages 13+)

Tuesday, Dec 31 | 11:00 AM to 1:30 PM

Say "Goodbye" to 2024 by enjoying the meadows, woods, and trails of the Rancocas preserve. This is a vigorous two and a half hour three-mile hike with elevation changes, so dress for the weather, bring a warm beverage, and pack a snack. Meet at the Rancocas State Park Westampton parking area near Irick Road. Inclement weather cancels. The program is free — FRNC membership or donation suggested Register at [www.rancocasnaturecenter.org](http://www.rancocasnaturecenter.org)



Photo by Jen Bulava

## Bird Talk: Winter Waterfowl of New Jersey

Saturday, Jan 11  
1:00 to 2:00 PM

Winter is a wonderful time to look for waterfowl in New



Jersey. A large variety of ducks, swans, and geese spend the winter on the state's coastal waterways and inland bodies of water. Join Rancocas teacher naturalist and avid birder Michelle Horowitz for an informative session, and discover which species are around in the winter months, how to identify them, and where they might be found. The program is free for Rancocas members; \$10/person for non-members. Register at [www.rancocasnaturecenter.org](http://www.rancocasnaturecenter.org)

Above Photo by Jen Bulava

## CONNECT WITH NATURE SERIES: Losing the Lawn—A Personal Journey

Sunday, January 19  
1:00 to 2:00 PM

Is it easy to create a bountiful natural wildlife habitat in your yard? Join Rancocas naturalist Patty Rehn as she shares a presentation on how she transformed her lawn into a native garden teeming with birds, mammals, and insects. Explore ways to create a productive habitat in place of the green monoculture in your yard. Native plants are adapted to the local climate and soil conditions where they naturally occur. These important plant species provide nectar, pollen, and seeds that serve as food for native butterflies, insects, birds and other animals. And the bonus is less area to mow. The program is free — FRNC membership or donation suggested. Register at [www.rancocasnaturecenter.org](http://www.rancocasnaturecenter.org)

## ESCAPE ART SERIES (AGES 16+)

### Nature's Shadow Box

Sunday, Jan 12 | 1:30 to 3:30 PM

Looking to get out of the house and exercise your imagination? Join us as we get creative using natural items and decoupage to create tiny worlds inside of shadow boxes. All supplies will be provided, but of course you are free to bring trinkets or other small items to add to your creation. Cost: \$25/per person (includes all needed supplies and materials). Register at [www.rancocasnaturecenter.org](http://www.rancocasnaturecenter.org)



# Rancocas Nature Center

794 Rancocas Road, Westampton, NJ 08060 | [www.rancocasnaturecenter.org](http://www.rancocasnaturecenter.org)

## ••••• **ADULT & TEEN PROGRAMS** ••••• SUITABLE FOR INTERESTED TEENS | REGISTRATION REQUIRED



### **CONNECT WITH NATURE SERIES: Timbuctoo**

**Sunday, Feb 2 | 1:00 to 2:00 PM**

Fifteen years after archeological studies put Timbuctoo “on the map” as a historic site, preservation and educational activities are thriving. Come and hear Timbuctoo descendant, Guy Weston, talk about what has been learned at the site, about the Timbuctoo Historical Society’s innovative projects to share information in schools and in community settings, and about strategies to preserve Timbuctoo for generations to come. Weston will also seek input on ways to make Timbuctoo more engaging for visitors, since the primary above ground evidence of Timbuctoo’s history is a small cemetery. Weather permitting, a visit to Timbuctoo will follow the program. The program is free; a donation to the Timbuctoo Historical Society is suggested. Register at [www.rancocasnaturecenter.org](http://www.rancocasnaturecenter.org)

### **Winter Nature Journaling Walk** (Ages 16+)

**Saturday, February 8 | 1:30 to 3:00 PM**

Bring your nature journal/sketchbook and join teacher naturalist Robin Sperry on a trail hike in the Rancocas Nature Center preserve. We’ll make stops to journal some of the season’s visual diversity—both its stark, raw beauty and its quiet peacefulness. Inclement weather cancels. Program is free; FRNC membership or a donation is suggested. Register at [www.rancocasnaturecenter.org](http://www.rancocasnaturecenter.org)

### **Passionate for Plants** (Ages 16+)

**Sunday, February 9  
1:30 to 3:30 PM**

Just in time for Valentine's Day! Join us and learn how to propagate a Sweetheart Hoya plant and use it as a love note to your significant other, family member, yourself, or even your pet. Yes, most Hoya plants, particularly the Sweetheart Hoya, are non-toxic to our furry family members. This workshop, with Rancocas teacher naturalist Robin Sperry, will show participants how to propagate Hoyas-- as single leaf or full-size plants. In addition, we’ll share information about successfully growing hoyas. The finished project—a propagated leaf with “love note” makes a great holiday gift. Cost: \$25/per person (includes planter and all needed supplies and materials).

Register at [www.rancocasnaturecenter.org](http://www.rancocasnaturecenter.org)



### **FIELD TRIP: Birding at Barnegat Light, Long Beach Island**

**Saturday, January 25 | 10:00 AM to 1:00 PM**

The northern tip of Long Beach Island, Barnegat State Park, is a great location to view an assortment of winter birds along the Jersey shore. The trip also includes a stopover at other LBI locations. Possible sightings include Harlequins, seabirds, gulls, and winter migrants. Meet in the Barnegat Light State Park parking lot. The program is free; FRNC membership or a \$10 donation is suggested. Inclement weather cancels. Register online at [www.rancocasnaturecenter.org](http://www.rancocasnaturecenter.org)

# Rancocas Nature Center

794 Rancocas Road, Westampton, NJ 08060 | [www.rancocasnaturecenter.org](http://www.rancocasnaturecenter.org)

## ••••• **ADULT & TEEN PROGRAMS** ••••• SUITABLE FOR INTERESTED TEENS | REGISTRATION REQUIRED

### **Galentine's Day Celebration**

**Saturday, February 15 | 2:00 to 4:00 PM**

Girls just want to have fun! It is wonderful to get out and enjoy nature in winter surrounded by our gal friends. So single or married, join us as we celebrate Galentine's Day at the Rancocas Nature Center. After a brisk trail hike, we will gather for some social time and enjoy Galentine's Day treats—including some from Robins Nest in Mt Holly.

Cost: \$15/person. Register at [www.rancocasnaturecenter.org](http://www.rancocasnaturecenter.org)

### **RANCOCAS AFFILIATED CLUB MEETINGS**

### **RNC Outdoor Photography Club**



**Thursdays | 10:00 AM to 12:00 PM**

**December 5, January 2 & February 6**

**All Are Welcome!** Club meets the first Thursday of every month in the Rancocas Nature Center classroom or at a designated alternative outdoor location. Contact [rencphotoclub@gmail.com](mailto:rencphotoclub@gmail.com) for details.

### **Waiting for Woodcock**

**(for Birders & Past Participants)**

**Sunday, February 23 | 5:45 PM**

This is an opportunity for those who have already done our woodcock program in previous years, to come out to help us scout for woodcock. Bring your binoculars and/or camera and dress for the weather; it can get chilly waiting till almost dark. Feel free to bring a chair. Beginners should register for our 'Woodcock for Beginners' in March. The program is free — FRNC membership or donation suggested. Inclement weather cancels. Program is free; FRNC membership or a donation is suggested. Register at [www.rancocasnaturecenter.org](http://www.rancocasnaturecenter.org)

### **Woodcock For Beginners: American Woodcocks & Their Aerial Displays**

**Thursday, March 6 | 5:30 PM**

Each year in the late winter, the American Woodcock move northward at the beginning of their breeding season. One of their migration stops is the Rancocas meadow—a reliable spot to catch the male of the species performing a fascinating aerial display to impress the female Woodcocks. Rancocas naturalist Patti Rehn will share an informative PowerPoint presentation at the Center, then lead an outdoor session in the meadow—a unique viewing opportunity. The program is free; FRNC membership or donation suggested. Register at [www.rancocasnaturecenter.org](http://www.rancocasnaturecenter.org)

### **FIELD TRIP: Birding Franklin Parker Preserve**

**Saturday, February 8 | 10:00 AM to 12:00 /1:00 PM**

The Franklin Parker Preserve is adjacent to approximately 250,000 acres of public conservation land in the form of five state-owned properties: Brendan Byrne State Forest, Wharton State Forest, Bass River State Forest, Greenwood Wildlife Management Area, and Penn State Forest. The Franklin Parker Preserve contains approximately 5,000 acres of wetlands habitat and 4,400 acres of contiguous upland pine oak forest, as well as 14 tributaries that cross the preserve and eventually unite in the Wading River. Being in the heart of the Pinelands Preserve area, some very interesting birds show up in winter. Join Audrey Dorofy and Michelle Horowitz for two to three hours of birding in this incredible place. Exact meeting spot will be sent to participants via email the week before. The program is free; FRNC membership or a \$10 donation is suggested. Inclement weather cancels. Register online at [www.rancocasnaturecenter.org](http://www.rancocasnaturecenter.org)



# EVENT RENTAL OPPORTUNITIES



## GROUNDS OF SMITHVILLE MANSION

803 SMITHVILLE RD, EASTAMPTON, NJ

Built in 1840, the Greek Revival building is surrounded by stone and brick courtyard walls that encompass a picturesque formal parterre garden, grape arbor, and well-manicured lawns. While the Mansion is not available for rent, the courtyard grounds within the walls and a 40 x 80 event tent, with sides, may be reserved for catered affairs. From small to large events the tent can accommodate up to 160 people.

## LYCEUM OF HISTORY & NATURAL SCIENCES

307 HIGH ST, MT. HOLLY, NJ

The stately two and a half story Georgian building on over two acres of landscaped grounds offers a 24 x 43 foot community room and grounds that are available to rent for catered events. The maximum capacity is 72.



## BURLINGTON COUNTY AMPITHEATER

5 PIONEER RD, EASTAMPTON, NJ

With seating for 500, the amphitheater is perfect for a variety of entertainment.



## PARK PAVILIONS

For casual open-air events 8 of our parks offer various picnic areas with grills and pavilions that accommodate 25 to 80 people.



## GROUNDS AT THE BURLINGTON COUNTY PRISON MUSEUM

128 HIGH ST, MT. HOLLY, NJ

The Burlington County Prison Museum is a national historic landmark. While the museum is not available, the open 114 x 148 foot yard may be rented for catered events. Tents may be rented from a private vendor or through the selected caterers.



FOR MORE INFORMATION: [www.co.burlington.nj.us/953/weddings](http://www.co.burlington.nj.us/953/weddings)



## COMMUNITY AGRICULTURAL CENTER

500 CENTERTON RD, MOORESTOWN, NJ

The Agricultural Center sits nestled on a 62-acre preserved working farm. Our Market Barn, perfect for an outdoor rustic celebration, measures 105 x 40 feet and is covered with one open side. The Market Plaza, a 30 x 60 event tent on a concrete pad, in combination with the barn accommodates up to 175 people. Also on the property is the 1850 renovated farmhouse available for indoors events with a maximum capacity of 49 people.



FOR MORE INFORMATION: [www.burlcoagenter.com/event-rentals/](http://www.burlcoagenter.com/event-rentals/)

# Burlington County Parks & Facilities Mobile App

Built by  THEGOVAPP.COM  
CUSTOM MOBILE APPS



## INTRODUCING OUR **NEW** APP

Navigating critical information  
has never been **easier**.



**SCAN**  
TO DOWNLOAD!



**AVAILABLE FOR DOWNLOAD NOW!**

# Burlington County Troll Trek



**Keep on Trekking!**  
Visit all 19 trolls  
before the end of 2024!



**PLEASE NOTE:**  
Numbers on this map are positioned in approximate locations for decorative purposes only. Find the Trolls by using the addresses on the next page.

- |                                  |                                       |                         |
|----------------------------------|---------------------------------------|-------------------------|
| 1 Big Rusty by Thomas Dambo      | 9 Lumberton Township                  | 17 Bordentown City      |
| 2 & 3 Historic Smithville Park   | 10 Medford                            | 18 Springfield Township |
| 4 & 5 Mount Holly                | 11 Mt. Laurel Township                | 19 Arney's Mount Park   |
| 6 Rancocas Valley High School    | 12 Burlington County Agricultural Ctr |                         |
| 7 Rancocas Nature Center         | 13 Delanco                            |                         |
| 8 Burlington County Amphitheater | 14, 15, 16 Burlington City            |                         |

[www.co.burlington.nj.us/parks](http://www.co.burlington.nj.us/parks)



# Burlington County Troll Trek



**Keep on Trekking!**  
**Visit all 19 trolls**  
**before the end of 2024!**



**1 Hainesport:**

“Big Rusty” by Thomas Dambo  
(near) 1400 Rt. 38, Hainesport, NJ 08036

**2 Historic Smithville Park:**

“Gracie, the Gardener” by Norma & John Neimeister  
803 Smithville Rd. Eastampton, NJ 08060

**3 Historic Smithville Park:**

“Troll on a Stroll” by KT Carney  
803 Smithville Rd. Eastampton, NJ 08060

**4 Mount Holly:**

“Retlaw” by Julia Park & Adam Pietras  
(near) 24 White Street, Mount Holly NJ 08060

**5 Mount Holly:**

“Bucket Head Bobby” by Lowell Doerr  
(near) 61 Washington Street, Mount Holly NJ 08060

**6 Rancocas Valley High School Annex**

“Weft” by Cassie Jones  
1048 Smithville Rd, Mt Holly, NJ 08060

**7 Rancocas Nature Center**

“Woody” by Jason Brown  
794 Rancocas Mt Holly Rd, Westampton, NJ 08060

**8 Burlington County Amphitheater**

“Pipsqueak” by Maya Sorhage  
5 Pioneer Blvd. Westampton, NJ 08060

**9 Country Village Playground, Lumberton:**

“Melinda” by Jennifer Hildebrand  
139 Stonebrook Dr., Lumberton, NJ 08048

**10 Medford:**

“Flora” by Carmen & Eduardo Jimenez  
(between) 6 & 10 S. Main St., Medford, NJ 08055

**11 Elbo Park, Mt. Laurel:**

“Sally McScraps”  
by Marc Tous, Fred Poinsett, & Steven Thorpe  
Elbo Ln, Mt. Laurel Township, NJ 08054

**12 Burlington County Agricultural Center:**

“Noelle the Troll”  
by Marc Tous, Fred Poinsett, & Steven Thorpe  
500 Centerton Rd, Moorestown, NJ 08057

**13 Delanco:**

“Hagatha” by Jason Miller  
501 Burlington Ave at Vine Street, Delanco, NJ 08075

**14 Burlington City:**

“Visser” by Peter Bieling  
Riverbank at Talbot St. Burlington, NJ 08016

**15 Burlington City:**

“The Art Troll” by Michael Kane  
420 High St., Burlington, NJ 08016

**16 Burlington City:**

“RILY”, The Abilities Troll” by Resources for  
Independent Living Staff  
351 High St., Burlington, NJ 08016

**17 Bordentown City:**

“Edward” by John Cannon  
(near) 118 Farnsworth Ave, Bordentown, NJ 08505

**18 Juliustown Park, Springfield Twp:**

“Kevin” by Meg & Miles Simon  
Main St. / Rt. 669, Fort Dix, NJ 08640

**19 Arney’s Mount Park:**

“Tommy the Tetanus Troll” by Marc Tous,  
Fred Poinsett, & Steven Thorpe  
150 Juliustown Rd., Columbus, NJ 08022



**Scan here for live GPS links to the Troll locations!**