



**Burlington County Board of
Chosen Freeholders Sponsors**

New Harmonies

“Traveling Smithsonian Exhibit” at Historic Smithville Park
Smithville Rd, Eastampton, NJ

Open June 13 - July 26 • 11 am - 4 pm Daily

American Roots Musical Fun for the Whole Family

Free Admission & Free Parking!

Learn about the musical journey of the American story of democracy, freedom and diversity.

- New Harmonies: Celebrating American Roots Music introduces visitors to the broad range of musical styles and traditions that mirror our national diversity.
- “Roots music” refers to the music that has grown out of the classic folk tradition.
- American roots music evolved from a blend of Anglo-European, Native American, and West African music traditions, giving birth to the other music forms, including folk ballads, country, blues, bluegrass, and gospel.
- These forms led to the development of jazz, rhythm and blues, rock and roll, and hip-hop.
- Over time, other immigrant groups’ music traditions were also integrated into the American roots music experience.
- Exploring roots music reveals how people from all over the world have combined their cultural traditions with those borrowed from others to create music that tell a dynamic American story of democracy, freedom and diversity.

The Burlington County Board of Chosen Freeholders and the New Jersey Council for the Humanities, a state partner of the national Endowment for the Humanities, has made the Exhibit, *New Harmonies: Celebrating American Roots Music*, possible at the Smithville Annex Gallery in Burlington County. *New Harmonies: Celebration American Roots Music* is part of Museum on Main Street, in collaboration with Smithsonian Institution and State Humanities Councils nationwide. The United States Congress has provided support for Museum on Main Street.

About the Exhibit:

- Help celebrate and explore American roots music!
- Visit the **New Harmonies Traveling Smithsonian Exhibit** on display at the Smithville Mansion Annex Gallery
- View **Paintings by Ladybird Strickland**, Willingboro, NJ
Ladybird will exhibit her paintings of famous musicians, especially musicians that reflect the scenes of the Harlem nightlife in NYC featuring luminaries such as Josephine Baker, Duke Ellington, Marian Anderson, Eartha Kitt, Miles Davis and Billy Eckstein.
- See **Photographs by Alonzo Jennings**, Moorestown, NJ
Alonzo will exhibit his photographs of legendary jazz musicians featured in his book "This Was Jazz" for the six weeks of the New Harmonies exhibit at Smithville. Alonzo will be available most weekends to talk about his photographs including commentary on music, art and the creative process.
- Depicts the story of our nation through the music of our people with photographs, recordings, instruments, lyrics and artist profiles
- Visit the website - www.njch.org/newharmonies.html



Mansion Tours

Combine your visit to New Harmonies with a tour of the Smithville Mansion.

Visitors are invited to learn more about Hezekiah Smith and his historic company town, Smithville, during tours of the stately mansion every Wednesday and Sunday at 1, 2, and 3 pm. Offered by the Friends of the Mansion at Smithville, the nonprofit group raises funds to help restore and maintain the property. The tours cost \$5 for adults, \$4 for senior and \$3 for students. For more information about Mansions tours, call 609-261-3295.

Volunteers Needed:

- Volunteer docents needed to help keep the exhibit open seven days a week
- Advance training and guide books will be provided
- For more information, call (609) 265-5838.

New Harmonies is Open During Earth Fair, June 18, 2011

Back to Our Roots — Stage One

11 am – Capitol City Gospel Singers, a multi-denominational gospel group from Trenton performs sacred songs and spirituals.



Noon – Zydeco-a-Go-Go, a five-piece group specializing in Zydeco, Cajun, and New Orleans rhythm and blues takes the stage. Put on your dancing shoes.

1:30 pm – Bad Dogz, a popular Pinelands bluegrass band performs a unique blend of bluegrass and country music.

3 pm – Piney Hollow Drifters, an “old timey” band plays music in the old time tradition with old time instruments.

Back to Our Roots — Stage Two

11:30 am - John Colgan-Davis, leader of Philadelphia’s legendary Dukes of Destiny plays harmonica and sings the blues with accompaniment by guitarist Richard Ray Adler.

12:30 pm – Spook Handy tells America’s story through his own folk songs and songs by artists such as Pete Seeger and Peter, Paul and Mary.

1:30 pm – Queen Nur, a nationally-known storyteller along with Dwight Jones and Sarai Abdul-Malik present “Holla’, Shout & Turnabout,” interactive stories with audience participation using washboards, spoons and one-string buckets.

2:30 pm – Alvin Jacque Band performs New Orleans jazz.



Alvin Jacques

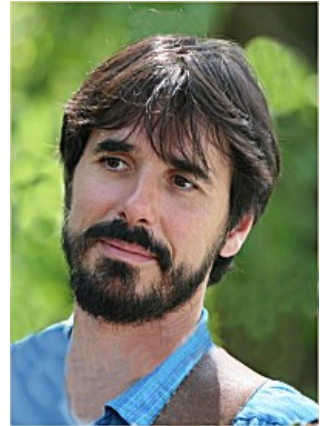
Summer Concert Series: Live Performances on Sundays

- **June 26: Performances at 2 pm & 3 pm**

The **Capitol City Gospel Singers**, a multi-denominational gospel group performing sacred songs and spirituals.

- **July 3: Performances at 2 pm & 3 pm**

Singer/songwriter **Spook Handy** performs “Stand Up & Sing Out Folk Music.” Join in the old-fashioned sing along as he tells “America’s Story through Folk Songs” by popular artists Pete Seeger, Peter, Paul and Mary, and his own. He will honor the great traditions of American roots music, songs inspired by the Dust Bowl, Great Depression, Civil Rights Movement, 60s and 70s Peace Movement and to present time.



- **July 10: Performances at 2 pm & 3 pm**

Enjoy an afternoon of country blues with **John Colgan-Davis**. Accompanied by guitarist **Richard Ray Adler**, John shares his rural and city blues history through harmonica music, singing and stories about the New Jersey oyster fishery and sea shanties. The program will take listeners through several styles and time-periods of Black folk music and blues.

- **July 17: Performance at 12:30 pm**

Be entertained by a special performance of Celtic maritime music by **Charlie Zahm**. Master of the guitar and a fine baritone voice, Charlie has become one of the most popular soloists at Celtic music festivals, Maritime and Early American music events east of the Mississippi.



- **July 17: Performances at 2 pm & 3 pm**

Pete Eshelman and his band **Zydeco-a-Go-Go** is the Mid-Atlantic’s premier Zydeco band specializing in Zydeco, Cajun and New Orleans Rhythm and Blues music. Pete will bring along Zydeco dance instructors to lead and teach Zydeco dancing to the audience. Interactive discussion to follow performance.



- **July 24: Performances at 2 pm & 3 pm**

Nationally-known storyteller **Queen Nur** along with **Dwight James** and **Sarai Abdul-Malik** present “Holla’, Shout, and Turnabout,” interactive stories accompanied by traditional folk songs, including Field Hollers, Street Cries, Work Songs, Games and the blues.



Friday Night Soiree: July 8 at 7 pm in the Gallery

- **Keepers of the Culture** present an evening specifically for adults
- Storytelling, music, poetry and more
- *Keepers of the Culture* informs, educates, enriches and restores storytelling to its traditional place of importance in the African-American community.

Old Fashioned Sock Hop – Saturday, July 23, 7 pm – 10 pm

- Dance the night away to those old 45s for an old fashioned sock hop
- BYOP - Bring Your Own Party – (food, friends and beverage)
- \$5 a person & Space is limited - For reservations, call 609-265-5858.

About Historic Smithville Mansion

The Historic Smithville Mansion, a local attraction with a rich history, will host the *New Harmonies: Celebrating American Roots Music* exhibit in the Smithville Mansion Annex Gallery from June 13 through July 26. The exhibit will be open daily from 11 a.m. to 4 p.m. free to the public. It is a fitting space to host a “roots” music exhibit because of all the music associated with the family and villagers at Smithville.

Built in 1840 and now the centerpiece of Smithville Park in Eastampton, the Greek revival building is the former home of Hezekiah B. Smith, an inventor, entrepreneur and politician who lived there from 1865 to 1887. Under Smith’s direction, the industrial village of Smithville thrived as an international center for the production of woodworking machinery and the Star Bicycle. **“Music”** also played a central role in the village’s burgeoning success.

Within one of the buildings in the village was an opera house where villagers could assemble for entertainment, including concerts by the highly-accomplished H.B. Smith Military Band, dances and performances by the local theatre group.

Also on the village grounds was a bandstand built for outdoor concerts that frequently featured a brass band, and a lyceum where activities included “musical performances of vocal solos, duets, and quartets and instrumental music by the Smithville brass band.” John Petersie, a violinist, was hired by Smith to perform at many of his social functions.

The exhibit is free. Visitors may also choose to tour the mansion for a nominal fee. Proceeds from the tour benefit the Friends of the Mansion at Smithville. The Mansion is open for tours on Wednesday and Sunday afternoons.

Directions to Historic Smithville Park

From Ben Franklin Bridge:

Take Route 30. Follow signs for Route 38 East.
Continue following the directions under “Heading East on Route 38” below.

Heading East on Route 38

From Intersection of Route 541 and 38: head East on Route 38 for 2.9 miles and turn left onto Smithville Road. Travel $\frac{3}{4}$ mile and turn left onto Meade.

Heading West on Route 38

From Intersection of Route 206 and Route 38: head West on Route 38, travel $\frac{3}{4}$ mile past the NJ Motor Vehicle Inspection Station and turn right onto Smithville Rd. Travel $\frac{3}{4}$ mile and turn left onto Meade Lane.

Via Route 295

Take Route 295 to Exit 47A – Mt Holly Route 541 South. Travel 2.5 miles, (pass 4 traffic lights) before 5th light for Woodlane Rd. Take jug handle to make left onto Woodlane Rd. (Route 630). Take Woodlane Rd. to 4th light (Smithville Rd.). Make right onto Smithville Rd. Take Smithville Rd. through one stop sign (blinking red light) at Powell Rd. Historic Smithville Park will be on your right. Turn right at Meade Lane.

Parking:

As soon as you turn onto Meade Lane, there is a parking lot on the left or you can continue by taking the bend to the left for additional parking.