

IN 2024, BURLINGTON COUNTY RESIDENTS RECYCLED 400 POUNDS PER HOME!

17	42	78	118	145
Pounds of Food & Beverage Cans	Pounds of Plastic Bottles, Jugs, & Tubs	Pounds of Glass Bottles & Jars	Pounds of Paper	Pounds of Cardboard

2024 COUNTY RECYCLING REPORT FOR HAINESPORT

1,230,140

POUNDS OF PAPER, CARDBOARD, BOTTLES, AND CANS RECYCLED!

LANDFILL DISPOSAL FEE SAVINGS: \$61,138

YOUR RECYCLING PROGRAM IS FUNDED BY THE BURLINGTON COUNTY BOARD OF COMMISSIONERS.



2025-2026 RECYCLING SCHEDULE | SET RECYCLING CURBSIDE BY 6 AM

AUGUST 2025		SEPTEMBER 2025		OCTOBER 2025		NOVEMBER 2025		DECEMBER 2025		JANUARY 2026																																																				
S	M	T	W	TH	F	S	S	M	T	W	TH	F	S	S	M	T	W	TH	F	S	S	M	T	W	TH	F	S	S	M	T	W	TH	F	S	S	M	T	W	TH	F	S																					
3	4	5	6	7	8	9	7	8	9	10	11	12	13	5	6	7	8	9	10	11	2	3	4	5	6	7	8	7	8	9	10	11	12	13	4	5	6	7	8	9	10	11	12	13	14	15	16	17	18	19	20	21	22	23	24	25	26	27	28	29	30	31
10	11	12	13	14	15	16	14	15	16	17	18	19	20	12	13	14	15	16	17	18	9	10	11	12	13	14	15	14	15	16	17	18	19	20	11	12	13	14	15	16	17	18	19	20	21	22	23	24	25	26	27	28	29	30	31							
17	18	19	20	21	22	23	21	22	23	24	25	26	27	19	20	21	22	23	24	25	16	17	18	19	20	21	22	21	22	23	24	25	26	27	18	19	20	21	22	23	24	25	26	27	28	29	30	31														
24	25	26	27	28	29	30	28	29	30				26	27	28	29	30	31	23	24	25	26	27	28	29	28	29	30	31				18	19	20	21	22	23	24	25	26	27	28	29	30	31																
31													30						30							28	29	30	31				25	26	27	28	29	30	31																							

FEBRUARY 2026		MARCH 2026		APRIL 2026		MAY 2026		JUNE 2026		JULY 2026																																																											
S	M	T	W	TH	F	S	S	M	T	W	TH	F	S	S	M	T	W	TH	F	S	S	M	T	W	TH	F	S	S	M	T	W	TH	F	S	S	M	T	W	TH	F	S																												
1	2	3	4	5	6	7	1	2	3	4	5	6	7	5	6	7	8	9	10	11	3	4	5	6	7	8	9	7	8	9	10	11	12	13	5	6	7	8	9	10	11	12	13	14	15	16	17	18	19	20	21	22	23	24	25	24	25	26	27	28	29	30	28	29	30	31			
8	9	10	11	12	13	14	8	9	10	11	12	13	14	12	13	14	15	16	17	18	10	11	12	13	14	15	16	14	15	16	17	18	19	20	12	13	14	15	16	17	18	17	18	19	20	21	22	23	21	22	23	24	25	26	27	19	20	21	22	23	24	25	26	27	28	29	30	31	
15	16	17	18	19	20	21	15	16	17	18	19	20	21	19	20	21	22	23	24	25	17	18	19	20	21	22	23	21	22	23	24	25	26	27	19	20	21	22	23	24	25	21	22	23	24	25	26	27	19	20	21	22	23	24	25	26	27	28	29	30	31								
22	23	24	25	26	27	28	22	23	24	25	26	27	28	26	27	28	29	30	24	25	26	27	28	29	30	28	29	30					19	20	21	22	23	24	25	26	27	28	29	30	31																								

HOLIDAY SCHEDULE WEEK OF: **Labor Day - Recycle Wednesday, September 3, 2025**
Memorial Day - Recycle Wednesday, May 26, 2026

NOTE: Recycling WILL be collected on Veteran's Day - November 11, 2025

THIS BROCHURE IS ONLY FOR RESIDENTS OF: **HAINESPORT**

QUESTIONS?

RECYCLING CARTS
(609) 267-2730, ext. 100



CURBSIDE RECYCLING ISSUES
609-267-6889
 Email: recycling@otcbc.org

GENERAL RECYCLING INFORMATION
609-499-1001
 Email: recycle@co.burlington.nj.us
 Online: burlcorecycles.com

Download the FREE Recycle Coach App!

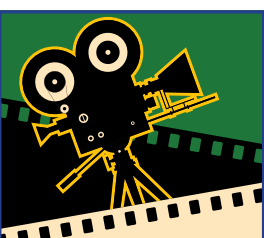
RECYCLING DROPOFF SITE

For Paper, Cardboard, Bottles and Cans:

Municipal Garage
100 Broad Street
HOURS: 24/7

Where to Recycle Computers & TVs:

Computers and TVs are banned from landfills in New Jersey. **Do NOT set them curbside for trash collection.** Contact your municipality or visit burlcorecycles.com for recycling options.



ADD THIS VIDEO TO YOUR WATCH LIST!

Grab the popcorn and find out how we sort your recycling.

Take the virtual tour at burlcorecycles.com

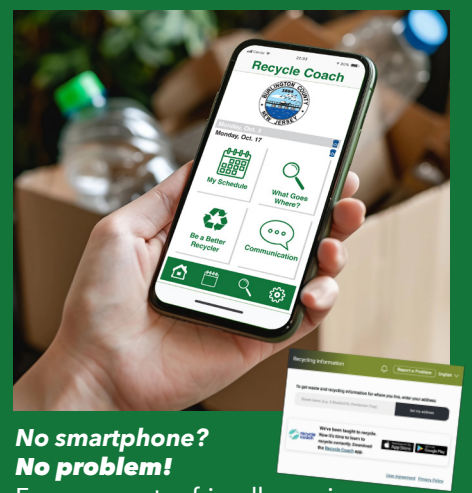
Don't miss another collection again!

Download the Recycle Coach app!



- View the recycling calendar and set reminders for your collection day
- Report missed pickups and collection issues
- Use the *What Goes Where* tool for info on handling TVs, batteries, hazardous waste, and more

SCAN ME



No smartphone? No problem!
 For a computer-friendly version, visit burlcorecycles.com.

RECYCLING CARTS WITH PLASTIC BAGS WILL NOT BE COLLECTED

Don't be misled! These bags CANNOT be used for recycling!



ONLY RECYCLE ITEMS SHOWN BELOW



Paper & Cardboard

No paper plates, towels, tissues, or napkins.
No wrapping paper with foil or glitter.



Plastic Bottles & Food Containers



Screw-top caps on plastic bottles are OK.
No Styrofoam or lids.



Glass Bottles & Jars

No ceramics or glassware.

EMPTY and RINSE
all bottles, jars, and containers.

DO NOT CRUSH
plastic bottles or metal cans.



Metal CANS Only

No paint or aerosol cans.



Cartons

No frozen food containers.

WATCH THIS MOVIE

to see how your recyclables are sorted!

Find our Single Stream Virtual Tour at burlcorecycles.com



Recycling carts with incorrect items WILL NOT BE SERVICED!

DO NOT RECYCLE:

BAGGED RECYCLING

STYRO-FOAM

REUSABLE BAGS

PLASTIC BAGS, FILM, OR WRAP

NO PLASTIC WITH



How to Prepare Your Recyclables

- Recyclables should be clean, dry, and empty.
- NEVER** bag recyclables. Place them loose in your cart.
- Recycling should be at the curb by 6am on collection day.
- Cardboard must be **emptied, flattened, folded** and placed in recycling container or stacked neatly and loosely next to it.

Pizza Box Guidelines

Pizza boxes must be clean and empty. A **small** amount of grease is okay.



Questions? Visit burlcorecycles.com, call (609) 499-1001, email recycle@co.burlington.nj.us or download the Recycle Coach app.

ONLY YOU CAN PREVENT RECYCLING FIRES!

RECHARGEABLE BATTERIES ARE THE MAIN CAUSE OF RECYCLING FIRES.

Rechargeable batteries are used in cellphones, power tools, and many household devices.



NEVER PUT BATTERIES IN YOUR RECYCLING!

Recycle these at Home Depot, Lowes, Staples and other locations listed at www.Call2Recycle.org.



Evesham truck fire - November 2024

To learn more, visit burlcorecycles.com, call (609) 499-1001 or download the RecycleCoach App.

RECYCLING CARTS ARE MUNICIPAL PROPERTY

It is illegal to put trash in your cart or move it to a new property.

Due to a serious rise in contamination, recycling carts are subject to inspection.