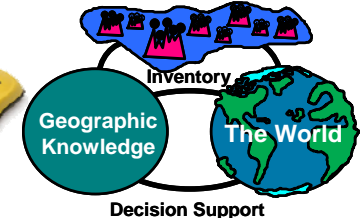
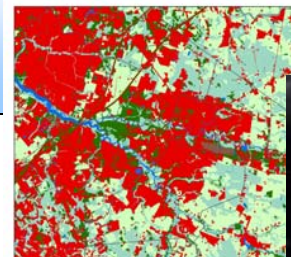


Join us In Celebrating GIS Day!  
 GIS Day at Burlington County College,  
Thursday, November 13, 2014



**BURLINGTON COUNTY COLLEGE**  
*We Can Get You There.*



### What is GIS?

More than one million people across the globe rely on geographic information system (GIS) technology to solve problems and make better decisions by thinking and planning geographically. GIS combines computer hardware, software, and data to collect, manage, and analyze geographic information.

With GIS, users can view relationships, processes, patterns, and trends in the form of maps, globes, reports, and charts. From mapping wildfires to finding the best location for your favorite coffee shop, GIS helps people see how the world works and changes.

### What is GIS Day?

Since 1999, more than 10,000 organizations have participated in GIS Day by hosting events such as open houses, hands-on workshops, community expos, career fairs, school-wide assemblies, and mapping projects. GIS Day success is due to the hard work and dedication of GIS users around the world who see the importance of sharing their GIS knowledge with others.

### Learn how GIS & GPS are used!

GIS is used by many organizations for mapping, analysis, and decision making. Join us to find out more about GIS applications such as supporting journalism, fighting childhood obesity, pre-planning for the Super Bowl, mapping water tables, inventorying transportation assets and much more!

### Who Should Attend?

All individuals interested in how geography, through the technology of GIS, affects your everyday life!

Organizations which use GIS are invited to display maps in the Map Gallery. Map submission deadline is November 12<sup>th</sup>. For more information or to display a map in the Gallery, contact: Merrilee Torres at 609-702-7067 or mtorres@co.burlington.nj.us

## Event: GIS Day at Burlington County College

### Preliminary Agenda

Date:	<b>Thursday, November 13, 2014, 9:00 am – 4:30 pm</b>	
Time:	9:00-4:30	Map Gallery
	9:00-12:00	Speakers
	12:00 -1:00	Lunch
	1:00–2:15	GPS Outdoor Field Activity
	1:30–4:30	MAGTUG meeting
	2:30–4:30	Hands-on, Self-paced GIS Lab Exercises
Location:	Burlington County College Mount Laurel Campus, Laurel Hall (Rm 320) & Technology Building (Tech 208) 3331 Route 38 Mount Laurel, NJ 08054	

### Description

GIS Day will kick off with a morning of speaker presentations highlighting GIS applications across various industries. The afternoon will include the MAGTUG (Mid-Atlantic Geospatial Transportation Users Group, [www.magtug.wordpress.com](http://www.magtug.wordpress.com)) fall meeting, a hands-on GPS exercise using professional equipment, and GIS exercises using professional software. A Map Gallery will be on display throughout the day. This is also an opportunity to learn about BCC's Geospatial Technologies program. Participants can take part in activities where prizes will be awarded.

The event is free and refreshments will be provided.  
**Seating is limited and registration is requested.**



**For more information and registration, go to: <http://www.co.burlington.nj.us/gisdayatbcc>**