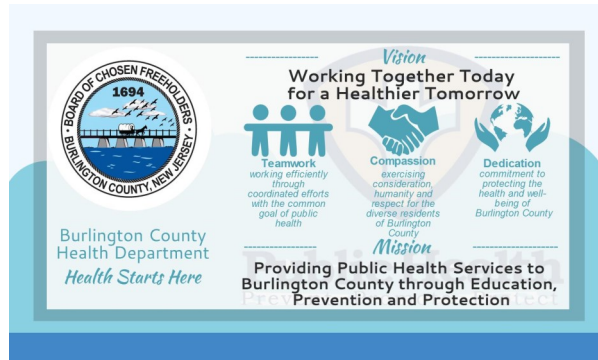


# Common Sources of Lead Exposure

A child's surroundings are full of lead. Children are exposed to lead from all different sources. Knowing what might be poisoning your child is important. Common sources of lead exposure are:

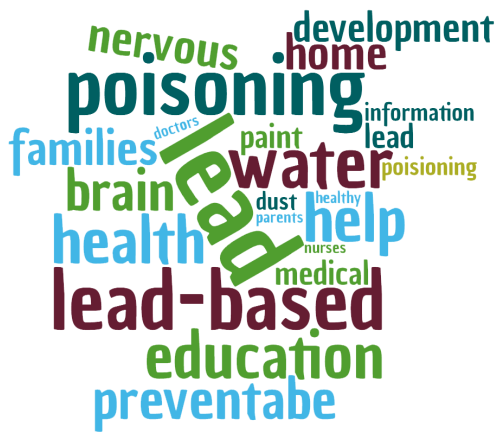
- Lead-based paint– Houses built before 1977
- Dust and soil– Lead paint can break off and land in the soil around your house that children play in or can turn into dust they breathe in in the home
- Tap water– As pipes made from lead break down, they can leach lead into your tap water
- Toys and toy jewelry
- Playing with/sucking on keys
- Lead-glazed ceramics, china, leaded crystal, and pewter
- Folk medicine, cosmetics, candies, or food especially from the Middle East, Southeast Asia, India, the Dominican Republic, or Mexico



Is your child exposed to lead?

Want to find out?





## Lead Case Management Nursing

The Burlington County Health Department is dedicated to reducing the impact of lead on young children. The Burlington County/Virtua Lead Case Manager follows New Jersey laws for screening and case management of children from 9 months to 72 months of age, with elevated blood lead tests.

### Case Management Services Offered

- Verbal and written lead education provided
- Monitoring of blood lead levels and recommended lead testing schedules
- Families are assisted in arranging fare helped with getting medical check-up, venous (vein) follow up blood work, developmental evaluations, etc.
- Provide referrals to community resources
- Coordinate care with the child's primary care provider and HMO case manager
- And much more

Call to find out if you qualify for these services. Services are provided by appointment only.

### Contact Information

Virtua Homecare Community Nursing Services

Burlington County Health Dept.  
15 Pioneer Blvd.  
Westampton, NJ 08060

T: 609-914-8550  
F: 609-914-8552

Monday to Friday, 8:30 am-4:00 pm

**Lead screening for those who qualify by appointment only**

### Where We Are

Burlington County Health Department,  
15 Pioneer Blvd,  
Westampton, NJ 08060

Exit 45A/B off 295 toward Mt. Holly  
BurLINK B1-Beverly Rail Station-  
Willingboro-Mt. Holly- Pemberton,  
Tarnsfield at Woodlane Stop

**The Burlington County Health Department and the Virtua Lead Case Management Nurses are dedicated to ensuring all children have access to the care they need.**

